

**Boston International College**  
**Bharatpur-10, Chitwan**  
**Affiliated to Pokhara University, Nepal**



**EMIS Report 2025**

Prepared by:  
EMIS Unit, BIC  
Date: March, 2025

## **EMIS Report Preparation Team**

### **Coordinator**

Mr. Nabin Kumar Shrestha, Undergraduate Assistant Director (Day)

### **Members**

Ms. Asmita Thapa, Exam Officer

Ms. Sheela Khatri, Exam Officer

Mr. Dipak Neupane, Account Officer

Ms. Sudha Bhattarai, Librarian

Mr. Manish Kandel, IT Officer

Mr. Pratik Mahato, Assistant IT Officer

Mr. Bishal Kandel, Assistant IT Officer

## **Declaration**

I hereby declare that the information and details included in this EMIS Report are true to the best of my knowledge. This report has been prepared by the EMIS Unit after a rigorous process of data collection, analysis, and interpretation. Furthermore, I attest that all methodologies employed in this study adhere to ethical standards and guidelines. Any discrepancies or limitations in the data have been duly noted and addressed to the best of our ability.



**Mr. Nabin Kumar Shrestha**

**Coordinator, EMIS**

Boston International College

Bharatpur, Chitwan

College Seal

## **Acknowledgement**

We express our heartfelt appreciation to the administration of Boston International College for entrusting the EMIS team with the vital responsibility of overseeing, organizing, and making accessible the comprehensive data of BIC. In fulfillment of this role, the EMIS team has diligently crafted this report, encompassing information pertaining to academic advancement, economic activities, as well as student and teacher records. This report stands as a testament to the collective teaching and non-teaching personnel at our institution.

Our sincere gratitude is extended to Mr. Anand Bahadur Chand, the esteemed College Chief, for his unwavering support and invaluable guidance throughout the report's preparation. His encouragement and counsel have played a pivotal role in shaping this document.

We are equally appreciative of Mr. Min Prasad Dawadi, the SAT Coordinator, for his expert guidance and steadfast support during the report's creation. His contributions have significantly enriched the quality and depth of the information presented herein.

Additionally, we wish to acknowledge the students at Boston International College for their cooperation and responsiveness in providing data and responding to inquiries posed by our team members. Their collaboration has been instrumental in ensuring the accuracy and comprehensiveness of this report.

## **Education Management Information System**

To ensure the successful implementation of this policy, it is essential that the education system is equipped with dependable Education Management Information (EMIS). A crucial component of the EMIS is the annual publication of a comprehensive report, and we are proud to present the inaugural EMIS report from the EMIS Unit of Boston International College.

The University Grant Commission (UGC) is striving to establish an all-encompassing and well-coordinated EMIS that spans from the UGC to the universities and their respective colleges. This system aims to be open and easily accessible to all stakeholders concerned. Boston International College is actively working on developing its EMIS, leveraging the H-EMIS system developed by the UGC. Our primary strategy revolves around the creation of a web-based, user-friendly EMIS system. We did encounter challenges during the development process, mainly due to the need for enhanced skills in utilizing the software. Nevertheless, our college has outlined plans for intensive training programs for our staff to address this limitation.

The EMIS report contains valuable information on academic programs, student demographics, faculty composition, research activities, publications, and financial data. These data points are meticulously disaggregated by key variables and subjected to comprehensive analysis, yielding crucial insights based on indicators derived from various sources. We anticipate that this report will be of immense value to researchers and all stakeholders within our academic community. We kindly request our readers to provide constructive feedback and suggestions to facilitate continuous improvement in future reports.

## **Table of Contents**

<b>EMIS Report Preparation Team</b>	<b>2</b>
<b>Declaration</b>	<b>3</b>
<b>Acknowledgement</b>	<b>4</b>
<b>Education Management Information System</b>	<b>5</b>
<b>Table of Contents</b>	<b>6</b>
<b>List of Figures</b>	<b>8</b>
<b>List of Tables</b>	<b>8</b>
<b>Abbreviations</b>	<b>9</b>
<b>Executive Summary</b>	<b>10</b>
<b>Chapter 1: Introduction</b>	<b>1</b>
1.1 Organization of the Report	1
1.2 Methodology	2
<b>Chapter 2: Faculty and Department</b>	<b>3</b>
2.1 Faculty of Management	3
<b>Chapter 3: Enrollment in the College</b>	<b>4</b>
<b>Chapter 4: Gender Parity Index</b>	<b>7</b>
<b>Chapter 5: Graduates</b>	<b>12</b>
<b>Chapter 6: Teaching and Non-Teaching Staff Details</b>	<b>23</b>
<b>Chapter 7: Student-Teacher Ratio</b>	<b>26</b>
<b>Chapter 9: Scholarship</b>	<b>28</b>
9.1 Undergraduate Scholarship	28
9.2 Undergraduate Scholarship Scheme	29
<b>Annex I: Program-wise fee paying and scholarship students (2024)</b>	<b>30</b>

<b>Annex II: Program Wise Graduate Record Undergraduate</b>	<b>31</b>
<b>Annex III: Program Wise Graduate Record Postgraduate</b>	<b>49</b>
<b>Annex IV. Placement Record till to date</b>	<b>53</b>
<b>Annex V: Undergraduate Placement Record</b>	<b>57</b>
<b>Annex VI: Non-Teaching Staffs</b>	<b>1</b>
<b>Annex VII: Faculty Details</b>	<b>3</b>

## **List of Figures**

Figure 3.1: Students enrollment in different programs in the year 2024	5
Figure 3.2: Students enrolled at different levels of education	6
Figure 4.1: Gender Parity Index in Different Level	8
Figure 4.2: Gender Parity Index in Program	11
Figure 5.1: Information on Pass Percentage in the year 2024 (Board Exam, 2024)	15
Figure 5.2: Program-wise graduates from college in the last three years: Undergraduate Level	19
Figure 5.3: Program-wise graduates from college in the last three years: Postgraduate Level	22
Figure 7.2 Faculty-wise student-teacher ratios	27

## **List of Tables**

Table 3.1: Student enrollment in different programs in the year 2024	5
Table 3.2: Students enrollment at different levels of education	6
Table 4.1: Gender Parity Index of BIC	7
Table 4.2: Gender Parity Index in Different Levels	7
Table 4.3: Gender Parity Index in Program	8
Table 5.2: Program-wise graduates from college in the last three years: Undergraduate Level	16
Table 5.3: Program-wise graduates from college in the last three years: Postgraduate Level	20
Table 6.1: Distribution of teaching staff according to academic degree	23
Table 6.2: Distribution of teaching staff according to position	23
Table 6.3: Number of faculty members at present by their qualifications	23
Table 6.4: Other Details of the Faculty Members	24
Table 6.5: Details of the Non-teaching Staff	25
Table 7.1 Faculty-wise student-teacher ratios of different level	26



## **Abbreviations**

MBA	:	Master of Business Administration
BBA	:	Bachelor of Business Administration
BBA-BI	:	Bachelor of Business Administration – Banking Insurance
BCIS	:	Bachelor of Computer Information System
BCSIT	:	Bachelor of Computer System and Information Technology
EMIS	:	Education Management Information System
IT	:	Information Technology
BIC	:	Boston International College
UGC	:	University Grants Commission
GPI	:	Gender Parity Index

## **Executive Summary**

The EMIS report for the year 2025 provides an overview of the state of higher education at Boston International College (BIC). BIC, a prominent institution for higher learning consists of a single faculty offering a diverse array of four distinct programs. Renowned as the premier management college in the Chitwan district, BIC stands out for its remarkable student enrollment figures and the comprehensive range of programs it provides. The institution boasts various faculties, departments, and units dedicated to both academic and administrative functions. BIC offers undergraduate and postgraduate programs in affiliation with Pokhara University, aligning its academic operations with the university's semester system.

## **Chapter 1: Introduction**

Boston International College (BIC) has taken the initiative to disseminate essential statistical insights concerning education, encompassing both bachelor's and master's programs, through its annual publication in the form of the EMIS report. This report offers a comprehensive overview of higher education activities within the college, to facilitate planning, policymaking, program design, and resource allocation, particularly in the context of BIC.

In the year 2023 A.D., BIC inaugurated an Education Management System (EMIS) as part of its higher education reform project. This endeavor is geared toward providing up-to-date information about the educational landscape within the institution. The present publication marks our inaugural effort to produce such an all-encompassing report of statistical data. The primary objective of this compilation is to furnish education stakeholders with adequate, precise, timely, and trustworthy data.

The contents of this report span a wide spectrum, including details on student enrollment, graduates, the Gender Parity Index (GPI), faculty composition (teaching and non-teaching staff), academic departments and programs, research, and publication activities, as well as the financial status of the college.

### **1.1 Organization of the Report**

There are eleven sections in the report; the first section provides an introduction to the report, the second section provides background information on the faculty/institute in the college. Section three gives faculty-wise and program-wise information on enrollment status and gender-wise distribution of the available data. Section four offers data on GPI. Section five provides information on graduates' passes from the college. Section six presents information about the distribution of graduates of the college. Section seven provides the gross enrollment ratios for bachelor's and master's degrees. Section eight presents information on the financial source and other financial aspects of the college. Information on teaching and non-teaching staff is presented in section nine. Section ten lists the student/teacher ratio (STR) in the college. Section eleven

provides information on the research and publication status of the college. The main texts are followed by an annexure to the report. It includes a total of four annexes.

## **1.2 Methodology**

This report was prepared through the direct or indirect contribution of the faculty and department, different divisions, and administrative sections within BIC. The data were collected from the administrative sections of the EMIS archive of the college. The data obtained are presented in a simple table and figure as and where necessary. Descriptive statistics were used for the analysis of data.

## **Chapter 2: Faculty and Department**

BIC has single Faculties with four different programs. Each aims to offer an excellent teaching, learning and research environment in a wide-ranging variety of fields.

### **2.1 Faculty of Management**

The Faculty of Management aims to offer advanced education to students, equipping them for academic and professional endeavors in the realms of business, industry, and government. Our mission is to cultivate dynamic and innovative entrepreneurs who can drive the growth of businesses and industries, contributing significantly to the socio-economic development of Nepal. The faculty obtained affiliation with Pokhara University on September 9, 2009. Within the faculty, we proudly offer the following diverse range of programs.

- MBA: Master of Business Administration
- BBA: Bachelor of Business Administration
- BBA-Finance: Bachelor of Business Administration Finance
- BCSIT: Bachelor of Computer System and Information Technology
- BHM: Bachelor of Hotel Management

### **Chapter 3: Enrollment in the College**

This report presents the enrollment data for various programs in our college for the year 2024. The data is categorized by program, gender (Male and Female), and provides the total enrollment for each program. Additionally, the report includes the percentage share of each program's enrollment relative to the total enrollment for the year.

The enrollment data for various academic programs highlight key trends in student distribution based on gender and program preferences. The total number of students across all programs is 268, with a gender split of 121 males and 147 females, indicating a slightly higher female representation (54.85%) compared to males (45.15%). The Bachelor of Business Administration (BBA) program has the highest enrollment, comprising 108 students (40.30%), with a significant female majority. Similarly, the BBA-Finance specialization also sees higher female participation, enrolling 33 students (12.31%), reinforcing the trend of female preference for business-related programs.

In contrast, Bachelor in Computer Science and Information Technology (BCSIT), which enrolls 47 students (17.54%), has more male students, suggesting that technology-related fields attract higher male participation. A similar trend is observed in the Bachelor of Hotel Management (BHM) program, where males constitute the majority among the 37 enrolled students (13.81%).

At the postgraduate level, the Master of Business Administration (MBA) program is divided into Spring and Fall intakes. The MBA Fall intake enrolls 30 students (11.19%), while the MBA Spring intake has a smaller cohort of 13 students (4.85%), indicating that more students prefer the Fall semester for MBA admissions. Notably, the MBA Spring intake has a significantly higher female enrollment, with 10 out of 13 students being female.

Overall, the data suggest that business programs, particularly BBA and BBA-Finance, are more popular among female students, while IT and hospitality programs tend to have a higher male representation. The MBA program shows seasonal enrollment variations, with the Fall intake attracting more students. These insights can be valuable for academic institutions in tailoring their marketing and recruitment strategies based on gender preferences and program demand.

**Table 3.1: Student enrollment in different programs in the year 2024**

Program	Male	Female	Total	Share
MBA Spring	3	10	13	4.85%
MBA Fall	14	16	30	11.19%
BBA	39	69	108	40.30%
BBA-Finance	10	23	33	12.31%
BCSIT	30	17	47	17.54%
BHM	25	12	37	13.81%
<b>Total</b>	<b>121</b>	<b>147</b>	<b>268</b>	<b>100.00%</b>

(Source: BIC, Exam Section, 2024)

**Figure 3.1: Students enrollment in different programs in the year 2024**

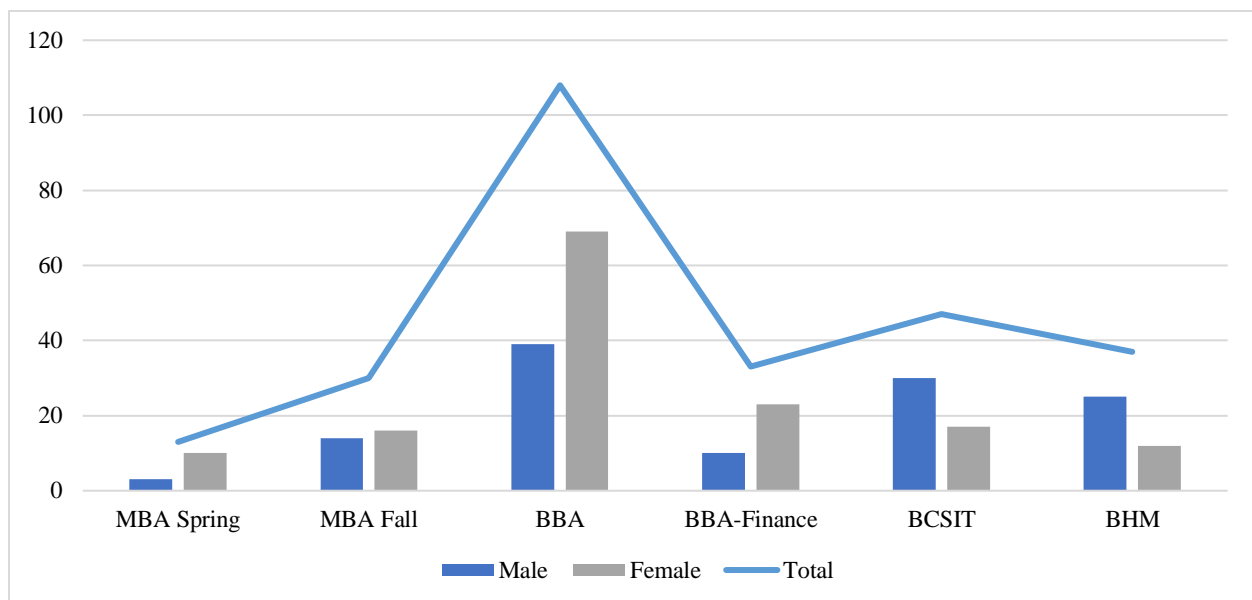


Table 2.2 reveals that the majority of students are enrolled in undergraduate programs, accounting for 225 students (83.96%). In contrast, graduate programs have a significantly smaller share, with only 43 students (16.04%).

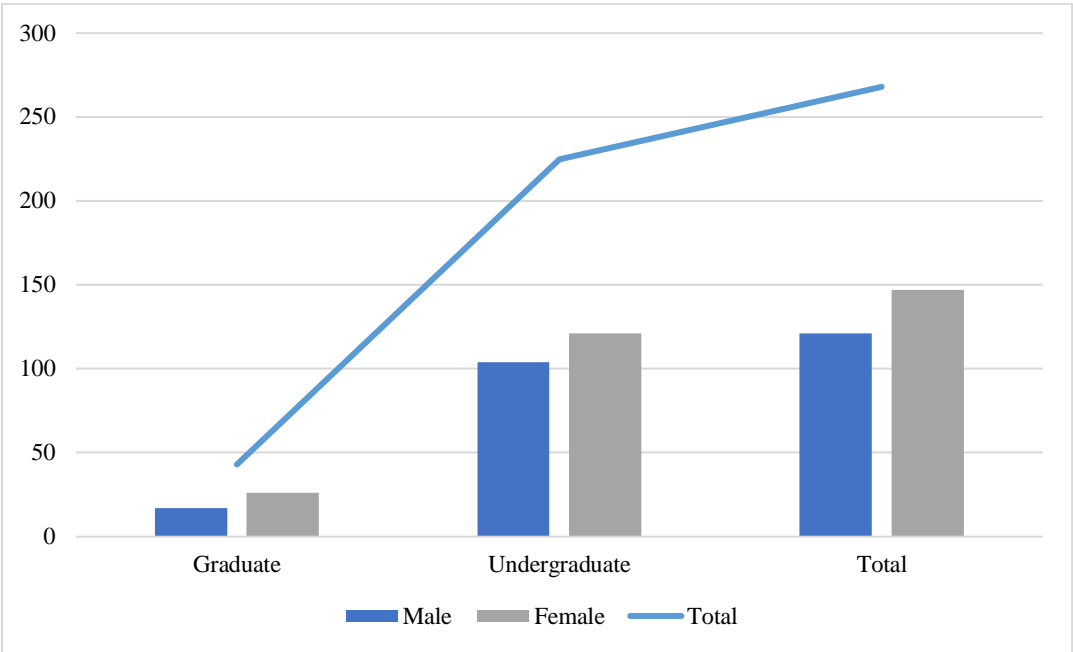
In terms of gender distribution, undergraduate programs have a higher female representation, with 121 female students compared to 104 males. Similarly, at the graduate level, females also outnumber males, with 26 females and 17 males, showing a consistent trend of higher female enrollment across both levels of study.

**Table 3.2: Students enrollment at different levels of education**

Level	Male	Female	Total	Share
Graduate	17	26	43	16.04%
Undergraduate	104	121	225	83.96%
<b>Total</b>	<b>121</b>	<b>147</b>	<b>268</b>	<b>100.00%</b>

(Source: BIC, Exam Section, 2024)

**Figure 3.2: Students enrolled at different levels of education**





## Chapter 4: Gender Parity Index

The Gender Parity Index (GPI) tells us about the access of female students to higher education. It is one of the most important indicators which is used to measure the participation of girls in higher education. GPI in higher education is expressed as the ratio of the number of girls to the number of boys enrolled in higher education. A value of near one indicates equality, less than 1 displays in favor of boys, and a value larger than 1 means disparity in favor of girls.

**Table 4.1: Gender Parity Index of BIC**

Year	Male	Female	Total	GPI
2024	121	147	268	1.21

(Source: BIC, Exam Section, 2024)

The Gender Parity Index (GPI) for BIC in 2024 is recorded at 1.21, indicating that female enrollment is higher than male enrollment. With a total of 268 students, the institution has 147 female students compared to 121 male students. A GPI greater than 1 suggests that there are more females than males in the student population, highlighting a positive trend in female participation in higher education.

This data reflects the institution's progress toward gender inclusivity, with women having greater representation in academic programs. The trend may suggest successful efforts in promoting education among female students or a general shift in enrollment patterns favoring women. Institutions can use this insight to further assess gender-based enrollment trends and ensure balanced opportunities for both male and female students across different academic disciplines.

**Table 4.2: Gender Parity Index in Different Levels**

Level	Male	Female	Total	Share
Graduate	17	26	43	1.53
Undergraduate	104	121	225	1.16

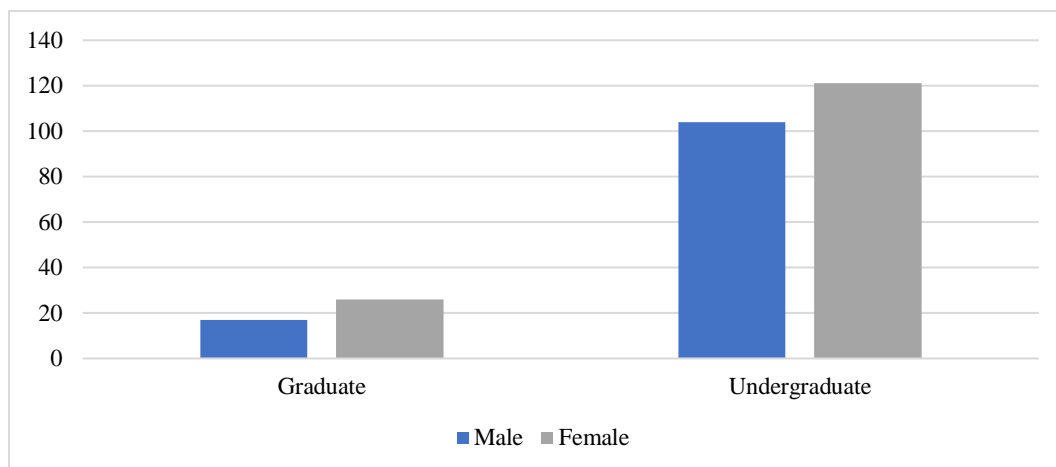
(Source: BIC, Exam Section, 2024)

Table 4.2 explains Gender Parity Index (GPI) at different academic levels highlights a higher female representation across both undergraduate and graduate programs. At the graduate level, there are 43 students in total, with 26 females and 17 males, resulting in a GPI of 1.53. This indicates that for every male student, there are 1.53 female students, showing a significantly higher female participation in postgraduate education.

Similarly, at the undergraduate level, there are 225 students in total, with 121 females and 104 males, leading to a GPI of 1.16. While the gender gap is smaller compared to the graduate level, it still shows a higher number of female students enrolled.

These figures reflect a strong trend of female dominance in higher education at BIC, particularly at the graduate level. This could indicate increased interest and accessibility of higher education for women, as well as successful institutional efforts in promoting gender inclusivity..

**Figure 4.1: Gender Parity Index in Different Level**



**Table 4.3: Gender Parity Index in Program**

Program	Male	Female	Total	Share
MBA	17	26	43	1.53
BBA	39	69	108	1.77
BBA-Finance	10	23	33	2.30
BCSIT	30	17	47	0.57
BHM	25	12	37	0.48
<b>Total</b>	<b>121</b>	<b>147</b>	<b>268</b>	

(Source: BIC, Exam Section, 2024)

Table 4.3 provides an analysis of student enrollment in different academic programs based on gender distribution. The data includes the number of male and female students enrolled in each program, the total student count, and a "Share" value, which appears to represent the gender ratio.

## **2. Program-wise Enrollment Analysis**

### **2.1 MBA (Master of Business Administration)**

- Male Students: 17
- Female Students: 26
- Total Students: 43
- Share: 1.53
- **Analysis:** The MBA program has more female students (26) compared to male students (17). This suggests a higher preference for MBA among female students. The Share value of 1.53 indicates a moderate level of gender disparity in favor of females.

### **2.2 BBA (Bachelor of Business Administration)**

- Male Students: 39
- Female Students: 69
- Total Students: 108
- Share: 1.77
- **Analysis:** The BBA program has the highest total enrollment (108 students). Female students (69) significantly outnumber male students (39). The Share value of 1.77 suggests a strong female representation in the program.

### **2.3 BBA-Finance (Bachelor of Business Administration - Finance)**

- Male Students: 10
- Female Students: 23
- Total Students: 33
- Share: 2.30

- **Analysis:** The female-to-male ratio in BBA-Finance is more than 2:1, indicating a strong preference for this specialization among female students. The Share value of 2.30 is the highest, highlighting a significant gender imbalance favoring female students.

## 2.4 BCSIT (Bachelor of Computer Science and Information Technology)

- Male Students: 30
- Female Students: 17
- Total Students: 47
- Share: 0.57
- **Analysis:** BCSIT is a male-dominated program with almost twice as many male students (30) as female students (17). The low Share value of 0.57 suggests a significant gender gap in favor of male students.

## 2.5 BHM (Bachelor of Hotel Management)

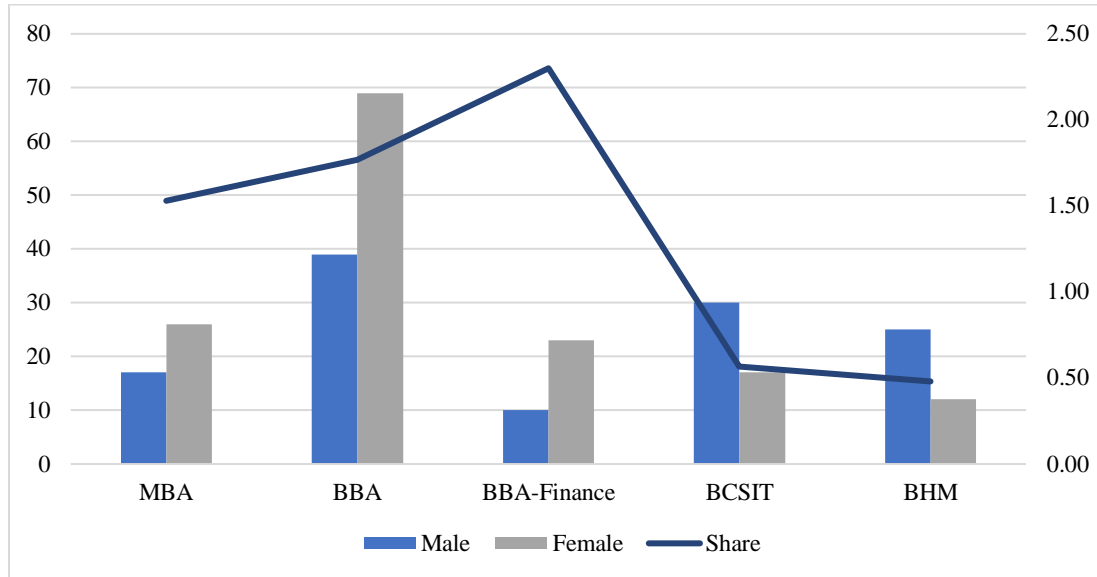
- Male Students: 25
- Female Students: 12
- Total Students: 37
- Share: 0.48
- **Analysis:** Similar to BCSIT, BHM is also male dominated, with more than twice as many male students (25) as female students (12). The Share value of 0.48 is the lowest, indicating the highest level of gender disparity among the programs analyzed.

## Summary

- BBA-Finance (GPI = 2.30) has the highest gender disparity in favor of females, meaning there are 2.3 female students for every male student.
- BBA (GPI = 1.77) also has a strong female dominance, showing that for every male student, there are 1.77 female students.
- MBA (GPI = 1.53) is moderately skewed towards females, indicating a slight preference among female students for this program.
- BCSIT (GPI = 0.57) is male-dominated, meaning there are significantly fewer female students in technology-related fields.

- BHM (GPI = 0.48) has the lowest GPI, indicating the highest gender disparity in favor of males.

**Figure 4.2: Gender Parity Index in Program**



## Chapter 5: Graduates

This section presents graduates of the college according to the level of faculty and program. However, there are some difficulties in obtaining the actual number of graduates. The number of students who obtain grade sheets/transcripts in a particular year is taken as the basis for calculating the graduates.

**Table 5.1: Information on Pass Percentage in the year 2024 (Board Exam, 2024 Spring)**

<b>Program</b>	<b>Semester</b>	<b>No. of Students Enrolled</b>	<b>Exam Appeared</b>	<b>No. of Students Passed</b>	<b>Pass %</b>
<b>BBA</b>	2nd	94	87	53	<b>60.92</b>
	4th	80	58	35	<b>60.34</b>
	5th	92	73	49	<b>67.12</b>
	6th	96	67	61	<b>91.04</b>
	8th	96	85	78	<b>91.76</b>
<b>BBA-BI</b>	4th	15	11	6	<b>54.55</b>
	5th	41	21	16	<b>76.19</b>
	6th	48	38	32	<b>84.21</b>
	8th	48	42	38	<b>90.48</b>
<b>BCIS</b>	4th	21	11	3	<b>27.27</b>
	5th	24	20	11	<b>55.00</b>
	6th	35	22	20	<b>90.91</b>
	8th	25	17	15	<b>88.24</b>
<b>BCSIT</b>	2nd	48	44	15	<b>34.09</b>
<b>MBA</b>	1st	13	11	8	<b>72.73</b>
	3rd	12	12	6	<b>50.00</b>
	4th	9	7	5	<b>71.43</b>
	6th	18	18	16	<b>88.89</b>
<b>Average Pass Rate</b>					<b>69.73</b>

(Source: BIC, Exam Section, 2024)

Table 5.1 shows the pass percentage of students from different academic programs who appeared for board exams in the Spring of 2024. It breaks down the data for each semester of the respective

programs, highlighting the number of students enrolled, the number of students who appeared for the exams, the number of students who passed, and the resulting pass percentage.

Analysis of Table 5.1

### **1. BBA (Bachelor of Business Administration):**

- 2nd Semester:
  - 94 students enrolled, 87 appeared for the exam, and 53 passed. The pass percentage is 60.92%.
- 4th Semester:
  - 80 enrolled, 58 appeared, and 35 passed, with a pass percentage of 60.34%.
- 5th Semester:
  - 92 enrolled, 73 appeared, and 49 passed, yielding a pass percentage of 67.12%.
- 6th Semester:
  - 96 enrolled, 67 appeared, and 61 passed. The pass percentage jumps to 91.04%.
- 8th Semester:
  - 96 enrolled, 85 appeared, and 78 passed, resulting in a pass percentage of 91.76%.

### **2. BBA-BI (Bachelor of Business Administration in Banking and Insurance):**

- 4th Semester:
  - 15 enrolled, 11 appeared, and 6 passed, with a pass percentage of 54.55%.
- 5th Semester:
  - 41 enrolled, 21 appeared, and 16 passed, yielding a pass percentage of 76.19%.
- 6th Semester:
  - 48 enrolled, 38 appeared, and 32 passed, giving a pass percentage of 84.21%.
- 8th Semester:
  - 48 enrolled, 42 appeared, and 38 passed, resulting in a pass percentage of 90.48%.

### **3. BCIS (Bachelor of Computer Information Systems):**

- 4th Semester:
  - 21 enrolled, 11 appeared, and only 3 passed, yielding a very low pass percentage of 27.27%.

- 5th Semester:
  - 24 enrolled, 20 appeared, and 11 passed, giving a pass percentage of 55.00%.
- 6th Semester:
  - 35 enrolled, 22 appeared, and 20 passed, resulting in a pass percentage of 90.91%.
- 8th Semester:
  - 25 enrolled, 17 appeared, and 15 passed, with a pass percentage of 88.24%.

#### **4. BCSIT (Bachelor of Computer Science and Information Technology):**

- 2nd Semester:
  - 48 enrolled, 44 appeared, and 15 passed, with a low pass percentage of 34.09%.

#### **5. MBA (Master of Business Administration):**

- 1st Semester:
  - 13 enrolled, 11 appeared, and 8 passed, with a pass percentage of 72.73%.
- 3rd Semester:
  - 12 enrolled, 12 appeared, and 6 passed, giving a pass percentage of 50.00%.
- 4th Semester:
  - 9 enrolled, 7 appeared, and 5 passed, resulting in a pass percentage of 71.43%.
- 6th Semester:
  - 18 enrolled, 18 appeared, and 16 passed, with a high pass percentage of 88.89%.

#### **Average Pass Rate**

The overall average pass rate for all the programs combined in 2024 is 69.73%. This is calculated as an average of all the pass percentages listed across the various programs and semesters.

#### **Key Observations:**

1. High Pass Rates:
  - BBA 6th and 8th Semesters show high pass percentages of 91.04% and 91.76%, respectively.
  - MBA 6th Semester also has a relatively high pass percentage of 88.89%.



## 2. Low Pass Rates:

- BCIS 4th Semester has a very low pass percentage of 27.27%, which is significantly lower than other programs.
- BCSIT 2nd Semester has a low pass percentage of 34.09%.
- BBA 4th Semester has a lower pass percentage of 60.34% compared to other semesters.

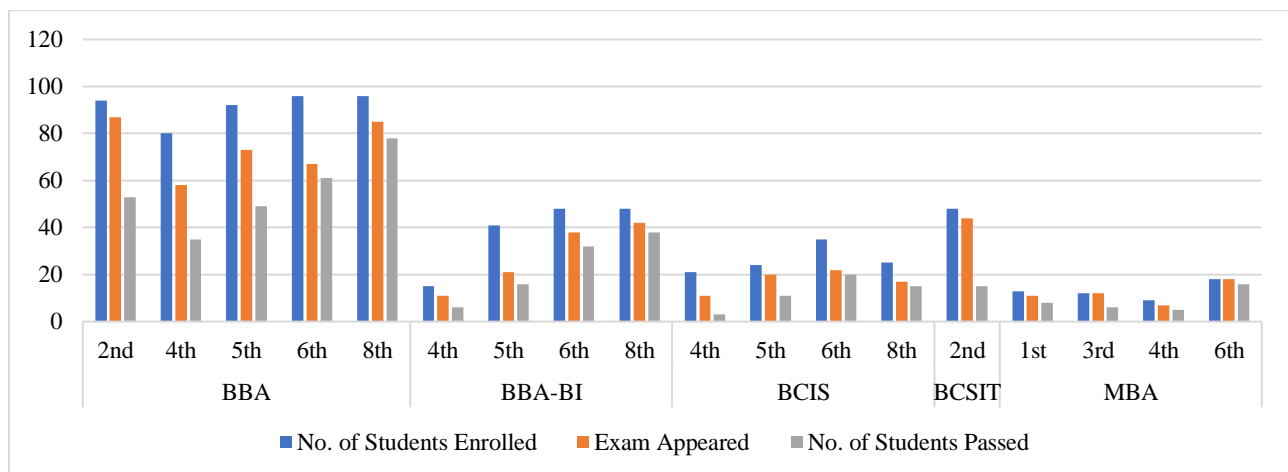
## 3. Trends in Improvement:

- In some programs like BBA, there's an evident improvement in the pass percentage over time, particularly in the 6th and 8th semesters, where students tend to perform better.
- For BBA-BI, the pass percentage gradually increases, from 54.55% in the 4th semester to 90.48% in the 8th semester.

## 4. Significant Gaps:

- There's a noticeable disparity between programs like BBA and BCIS. The BBA program generally has better pass percentages, especially in the higher semesters.
- BCIS in the 4th semester and BCSIT in the 2nd semester show lower success rates, which could suggest challenges for students in those specific semesters.

**Figure 5.1: Information on Pass Percentage in the year 2024 (Board Exam, 2024)**



**Table 5.2: Program-wise graduates from college in the last three years: Undergraduate Level**

<b>Undergraduate Level</b>									
<b>Program</b>	<b>2019</b>			<b>2018</b>			<b>2017</b>		
	<b>T</b>	<b>M</b>	<b>F</b>	<b>T</b>	<b>M</b>	<b>F</b>	<b>T</b>	<b>M</b>	<b>F</b>
<b>BBA</b>	75	33	42	69	26	43	74	23	51
<b>BBA-BI</b>	34	14	20	31	6	25	39	11	28
<b>BCIS/BCSIT</b>	12	8	4	9	6	3	14	7	7
<b>Total</b>	<b>121</b>	<b>55</b>	<b>66</b>	<b>109</b>	<b>38</b>	<b>71</b>	<b>127</b>	<b>41</b>	<b>86</b>

(Source: BIC, Exam Section, 2024)

This analysis breaks down the number of graduates by program and gender (Male and Female) over three years (2017, 2018, and 2019). The total number of graduates is given for each year, with the male (M) and female (F) graduate numbers presented separately for each program.

### **Total Graduates Analysis**

- 2019: The total number of graduates in 2019 was 121, with 55 males and 66 females.
- 2018: The total number of graduates in 2018 was 109, with 38 males and 71 females.
- 2017: The total number of graduates in 2017 was 127, with 41 males and 86 females.

From the above, we observe a decline in total graduates from 2017 to 2018 by 18 graduates (from 127 to 109), but a slight recovery in 2019 (12 more graduates than 2018). This indicates that there may have been some challenges in 2018, possibly related to enrollment or retention, but the situation seems to have stabilized in 2019.

### **Program-wise Trends**

#### **1. BBA (Bachelor of Business Administration):**

- 2019: 75 graduates (33 males, 42 females)
- 2018: 69 graduates (26 males, 43 females)
- 2017: 74 graduates (23 males, 51 females)

The BBA program shows a steady graduation trend over the three years, with a slight increase in 2019 after a drop in 2018. The female graduates outnumber male graduates in all three years, with the gap widening in 2019 (42 females vs. 33 males). The consistent number of graduates, despite the slight fluctuations, suggests that the BBA program remains stable and popular, particularly among female students.

2. BBA-BI (Bachelor of Business Administration in Banking and Insurance):

- 2019: 34 graduates (14 males, 20 females)
- 2018: 31 graduates (6 males, 25 females)
- 2017: 39 graduates (11 males, 28 females)

The BBA-BI program has shown a declining trend in the total number of graduates, with a decrease from 39 in 2017 to 31 in 2018, followed by a slight increase to 34 in 2019. Despite the overall decline, females consistently outnumber males in this program, with a significant shift in gender balance from 2017 to 2018. In 2018, there was a dramatic increase in female graduates (from 28 in 2017 to 25 in 2018), while the male graduate number dropped significantly (from 11 in 2017 to 6 in 2018). This could suggest that the program's focus or appeal may be shifting more toward female students over time.

3. BCIS/BCSIT (Bachelor of Computer Information Systems / Bachelor of Computer Science and Information Technology):

- 2019: 12 graduates (8 males, 4 females)
- 2018: 9 graduates (6 males, 3 females)
- 2017: 14 graduates (7 males, 7 females)

The BCIS/BCSIT program consistently has the fewest graduates among the three programs. The total number of graduates decreased from 14 in 2017 to 9 in 2018, then slightly rebounded to 12 in 2019. Although the total number of graduates is small, the gender distribution in 2019 shows a male-dominated trend (8 males vs. 4 females), suggesting a stronger interest from male students in this program. This is in contrast to the BBA and BBA-BI programs, where females are the majority. The overall small number of graduates in the BCIS/BCSIT program could indicate lower enrollment or interest in these fields.

## **Gender Distribution and Trends**

- **Female Dominance in BBA and BBA-BI:**
  - Both BBA and BBA-BI programs show a consistent higher number of female graduates compared to male graduates across all years. This trend is especially prominent in BBA-BI, where females outnumber males by a significant margin. For example, in 2018, there were 25 female graduates and only 6 male graduates in BBA-BI. This suggests that the programs in business administration and informatics have more appeal to female students.
- **Male Dominance in BCIS/BCSIT:**
  - In contrast, BCIS/BCSIT shows a male-dominated graduation trend, especially in 2019, where 8 males graduated compared to only 4 females. The gender disparity in this program may reflect industry trends, where STEM fields (like computer science and IT) tend to attract more male students. The equal distribution of males and females in 2017 (7 each) in BCIS/BCSIT is an interesting anomaly, which could have been due to a unique cohort.

## **Year-on-Year Graduate Changes**

- **2017 to 2018 Decline:**
  - The most notable shift occurred between 2017 and 2018, with a significant drop in total graduates (from 127 in 2017 to 109 in 2018). This is primarily driven by a decline in the BBA-BI program (from 39 graduates in 2017 to 31 in 2018) and a reduction in the BCIS/BCSIT program (from 14 in 2017 to 9 in 2018). The BBA program experienced a slight dip but still maintained strong graduation numbers.
- **2018 to 2019 Recovery:**
  - There was a recovery in the number of graduates in 2019, with the total increasing to 121, up by 12 graduates from 2018. This was mainly due to a slight increase in the BBA-BI program (from 31 graduates in 2018 to 34 in 2019). The BBA program also saw a small increase from 69 to 75, which indicates that the program remained stable and in demand.

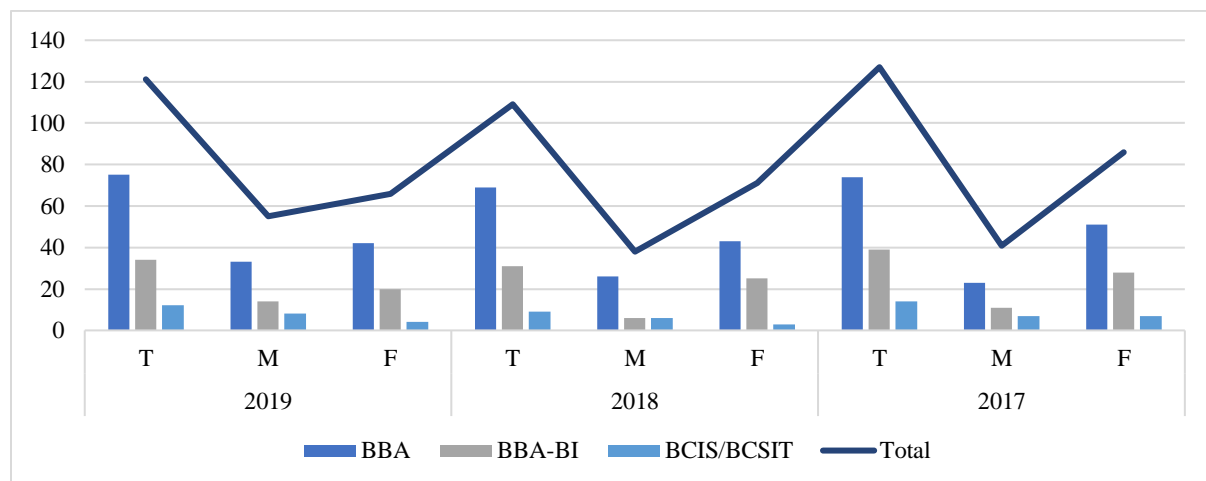
## Conclusion

The data reveals several important trends in graduate numbers:

- BBA remains the most consistent and popular program, with a steady number of graduates and a female-dominated trend across all years.
- BBA-BI has seen a decline in graduate numbers, particularly in 2018, but recovered slightly in 2019. Female graduates consistently outnumber male graduates, and there was a shift in gender dynamics between 2017 and 2018, where the number of female graduates increased significantly.
- BCIS/BCSIT has the smallest number of graduates, and the trend shows a male dominance, particularly in 2019. The program's low number of graduates and fluctuations from year to year suggest that there may be less interest or more challenges in retaining students in these fields.

Overall, while the BBA program remains the most stable and popular, both BBA-BI and BCIS/BCSIT face challenges in terms of attracting and retaining students, with gender trends and program popularity shifting over the years. These insights suggest that the college may need to address factors such as program appeal, recruitment strategies, and possibly even curriculum adjustments to ensure continued student interest and success across all programs.

**Figure 5.2: Program-wise graduates from college in the last three years: Undergraduate Level**



**Table 5.3: Program-wise graduates from college in the last three years: Postgraduate Level**

Postgraduate Level									
Program	2019			2018			2017		
	T	M	F	T	M	F	T	M	F
Spring	28	15	13	24	11	13	22	13	9
Fall	20	10	10	23	14	9	20	14	6
Total	48	25	23	47	25	22	42	27	15

(Source: BIC, Exam Section, 2024)

Table 5.3 provides data on the graduation numbers by season (Spring and Fall) for postgraduate students over three years (2017, 2018, and 2019). The numbers are broken down by male (M) and female (F) graduates, and the total number of graduates for each year and semester is presented. Here's a detailed analysis of the trends, patterns, and insights.

#### **Total Graduates Analysis (Across All Seasons and Years)**

- 2019: 48 total graduates (25 males, 23 females)
- 2018: 47 total graduates (25 males, 22 females)
- 2017: 42 total graduates (27 males, 15 females)

There has been a steady increase in total graduates over the years:

- From 42 graduates in 2017, there was a rise to 47 graduates in 2018, and then to 48 graduates in 2019.
- This represents an increase of 5 graduates from 2017 to 2018 and a slight increase of 1 graduate from 2018 to 2019. This gradual increase suggests stable growth in postgraduate graduation rates over the three years.

#### **Spring Semester Breakdown**

1. 2019: 28 graduates (15 males, 13 females)
2. 2018: 24 graduates (11 males, 13 females)
3. 2017: 22 graduates (13 males, 9 females)

The Spring semester shows an upward trend in graduate numbers:

- From 22 graduates in 2017, there was an increase to 24 in 2018, and then to 28 in 2019.
- The increase from 2017 to 2019 is 6 graduates, which reflects a steady rise in the number of students graduating in the Spring semester.
- Gender Distribution in Spring:
  - In 2019, there were 15 male graduates and 13 female graduates in the Spring semester, showing a slightly higher number of males.
  - However, in 2018, the number of female graduates (13) was the same as male graduates (11), showing gender parity in that year.
  - In 2017, males outnumbered females in the Spring semester, with 13 males compared to only 9 females.

This indicates a gradual shift toward gender balance in the Spring semester, with 2019 showing almost equal numbers of male and female graduates, while in 2017, there was a clear male dominance.

### **Fall Semester Breakdown**

1. 2019: 20 graduates (10 males, 10 females)
2. 2018: 23 graduates (14 males, 9 females)
3. 2017: 20 graduates (14 males, 6 females)

The Fall semester shows some fluctuations in graduate numbers:

- 2017 and 2019 both had 20 graduates, while 2018 had a slight increase to 23 graduates.
- The Fall semester saw a decline in graduate numbers from 2018 to 2019 by 3 graduates, suggesting that fewer students completed their studies in the Fall semester in 2019 compared to the previous year.
- Gender Distribution in Fall:
  - In 2019, the gender distribution in the Fall semester is perfectly balanced with 10 male graduates and 10 female graduates.

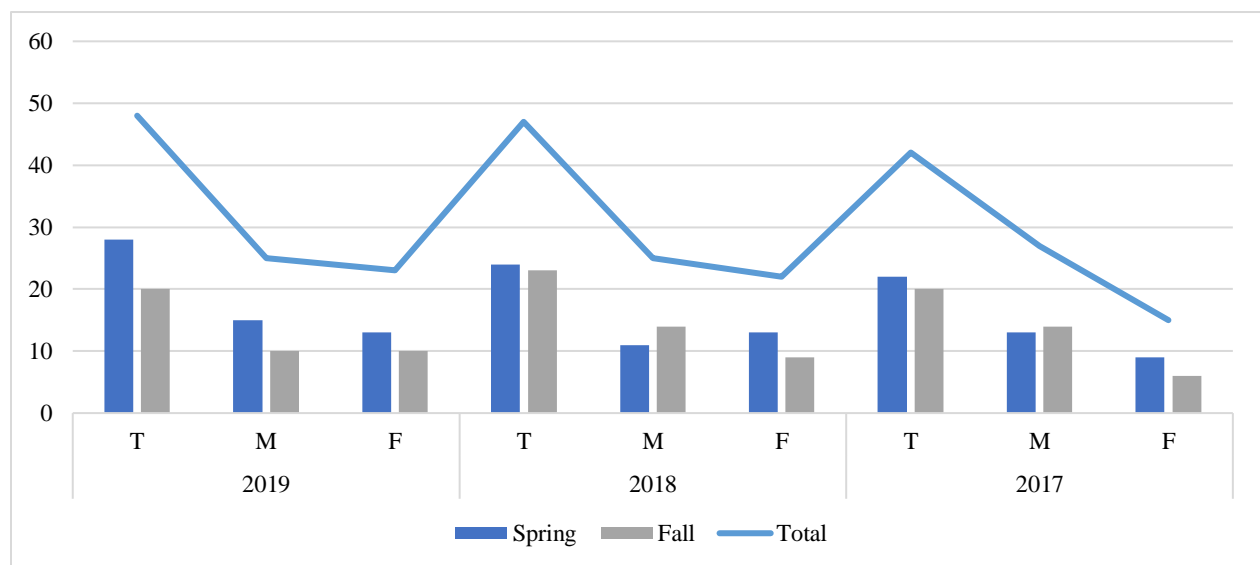
- In 2018, there were more male graduates (14) than female graduates (9), and in 2017, the gap was even larger with 14 males and only 6 females. The balance in 2019 suggests that the college is achieving greater gender parity in the Fall semester as well.

### Year-on-Year Comparison (Overall and Semester-wise)

- 2017: The total number of graduates was 42, with 27 males and 15 females. The Spring semester had 22 graduates, and the Fall semester had 20 graduates.
- 2018: The total number of graduates increased to 47, with 25 males and 22 females. The Fall semester saw an increase in graduates to 23, compared to 24 in Spring.
- 2019: The total number of graduates increased slightly to 48, with 25 males and 23 females. The Spring semester had 28 graduates, which was higher than the Fall semester with 20 graduates.

The data indicates that the postgraduate graduation numbers have been growing steadily, with a notable shift towards gender balance over the three years. The Spring semester has seen consistent growth in the number of graduates, while the Fall semester experienced some fluctuations, with a slight decline in 2019. The gender parity achieved in 2019 reflects broader trends in educational equity, with the college achieving a more balanced representation of male and female graduates.

**Figure 5.3: Program-wise graduates from college in the last three years: Postgraduate Level**





## Chapter 6: Teaching and Non-Teaching Staff Details

The Teaching and Non-Teaching Staff Details section provides comprehensive information on all personnel within the institution. It includes data on the number of teaching staff, their qualifications, subjects handled, and years of experience. Additionally, it covers non-teaching staff roles such as administrative personnel, support staff, and technical teams, highlighting their contributions to the institution's operations. This section ensures transparency in workforce distribution and aids in effective resource planning and management.

**Table 6.1: Distribution of teaching staff according to academic degree**

Level	Ph.D	Ph.D. (Scholar)	M.Phil.	M.Phil. (Scholar)	Masters	Total	Share (%)
Graduate	1			1	7	9	20.45
Undergraduate	2	1	1	1	30	35	79.55
Share (%)	6.82	2.27	2.27	4.55	84.09	44	100.00

(Source: BIC, Account Section, 2024)

**Table 6.2: Distribution of teaching staff according to position**

Level	Prof.	Assoc. Prof.	Lecturer	Asst. Lecturer	Total	Share (%)
Graduate	0	3	6		9	0.18
Undergraduate	0	6	14	22	42	0.82
Share (%)	0.00	17.65	39.22	43.14	51	1.00

**Table 6.3: Number of faculty members at present by their qualifications**

Particulars	Academic Qualification											
Permanent / Full time	PhD		PhD Scholar		M. Phil		M. Phil Scholar		Master's		Grand Total	
	M	F	M	F	M	F	M	F	M	F	M	F
Professor	0	0	0	0	0	0	0	0	0	0	0	0
Associate Professor/Reader	1	0	0	0	0	0	1	0	3	0	5	0
Assistant Professor/Lecturer	0	0	0	0	0	0	0	0	8	4	8	4

Lecturer/Assistant Lecturer	0	0	0	0	1	0	1	0	7	1	9	1
Teaching Assistant/Instructors												
Deputy Instructor												
<b>Sub-Total</b>	1	0	0	0	1	0	2	0	18	5	22	5
Part Time Contract	PhD		PhD Scholar		M. Phil		M. Phil Scholar		Master's		Grand Total	
	M	F	M	F	M	F	M	F	M	F	M	F
Professor	0	0	0	0	0	0	0	0	0	0	0	0
Associate Professor/Reader	1	0	0	0	0	0	0	0	0	0	1	0
Assistant Professor/Lecturer	0	0	0	0	0	0	0	0	7	1	7	1
Lecturer/Assistant Lecturer	0	1	1	0	0	0	0	0	6	0	7	1
Teaching Assistant/Instructors												
Deputy Instructor												
<b>Sub – Total</b>	1	1	1	0	0	0	0	0	13	1	15	2
<b>Grand Total</b>	2	1	1	0	1	0	2	0	31	6	37	7

**Table 6.4: Other Details of the Faculty Members**

Academic Qualification	No. of Faculties
Post Doc.	0
PhD	3
PhD Scholar	1
M. Phil	1
M. Phil Scholar	2
Master's	37
Bachelor's	
Experience (in Yrs)	No. of Faculties
More than 20 years	5
15 to 20 years	6
10 to 15 years	7
5 to 10 years	13
Less than 5 years	12

**Table 6.5: Details of the Non-teaching Staff**

<b>Particulars</b>	<b>Distribution of Staff by Gender</b>		
	<b>Male</b>	<b>Female</b>	<b>Total</b>
Officers	4	4	8
Assistants	5	4	9
Support/help staff	5	7	12
Technical Staff	0	0	0
Intern	1	0	1
Canteen Attendant	0	3	3
Commis Chef	1	2	3
Head Cook	1	0	1
Counsellor	0	1	1
<b>Total</b>	<b>17</b>	<b>21</b>	<b>38</b>

## Chapter 7: Student-Teacher Ratio

Student-teacher ratio (STR) measures the average number of students per teacher. It is calculated by the total number of students, divided by the total number of teachers. In this section, the STR of the college and STR of the campus of the faculty and institute are presented.

**Table 7.1 Faculty-wise student-teacher ratios of different level**

Level	No. of Students	No. of Teachers	Ratio
Graduate	60	9	7
Undergraduate	678	35	19
Total	738	44	

### 1. Graduate Level

- Number of Students: 60
- Number of Teachers: 9
- Student-Teacher Ratio: 7

#### Analysis:

At the Graduate level, the student-teacher ratio is 7:1, which is relatively low. This indicates that for every 7 students, there is 1 teacher. Such a ratio suggests that graduate classes tend to be smaller in size, which is typical of postgraduate education. Graduate-level programs often require more specialized attention from faculty, such as research guidance, mentorship, and in-depth discussions.

This low ratio implies a more personalized educational experience, where students likely have greater access to their professors for one-on-one consultations, projects, or research. Such a setup is ideal for graduate students who are expected to engage deeply with their studies and require more individualized support.

The small class size also indicates that the institution might be prioritizing quality over quantity, offering a more focused, in-depth learning experience at the graduate level.

## 2. Undergraduate Level

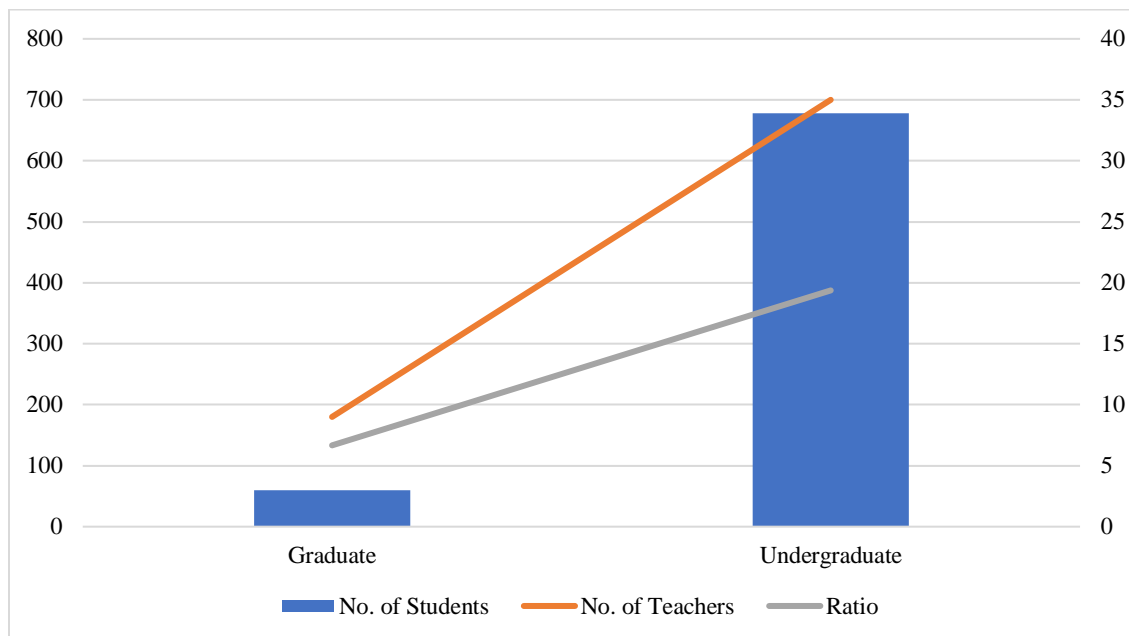
- Number of Students: 678
- Number of Teachers: 35
- Student-Teacher Ratio: 19

### Analysis:

At the Undergraduate level, the student-teacher ratio is 19:1, which is much higher than the graduate level. This means that for every 19 students, there is 1 teacher. This is typical of undergraduate programs, where class sizes are usually larger due to the higher number of students enrolled in these programs.

A 19:1 ratio suggests that students may not receive as much personalized attention from faculty members compared to their graduate counterparts. In larger classes, individual student needs may not be addressed as readily, and much of the learning will likely take place in a more structured, lecture-based environment. Students at the undergraduate level might have to rely on group work, online resources, and office hours for additional support from faculty.

**Figure 7.2 Faculty-wise student-teacher ratios**



## **Chapter 9: Scholarship**

### **9.1 Undergraduate Scholarship**

#### **1. University Scholarship**

BIC offers scholarships for deserving students who have passed the scholarship examination conducted by Pokhara University.

#### **2. Gold Medal Scholarship**

BIC refunds 100% of the tuition fees of the Gold Medalist who completes an MBA from BIC and is awarded the gold medal by the university.

#### **3. Dean's List Scholarship**

BIC refunds 20% of the tuition fees of the Dean-listed students who complete an MBA from BIC.

#### **4. Merit-Based Scholarship**

##### **a. Platinum**

Those students who score greater or equal to 3.95 CGPA out of 4.0 CGPA in their bachelor-level education are eligible for this scholarship. They will receive a scholarship of Rs. 4,00,000/-

##### **b. Gold**

Those students who score greater or equal to a 3.90 CGPA and 3.94 CGPA out of a 4.0 CGPA in their bachelor-level education are eligible for this scholarship. They will receive a scholarship of Rs. 3,50,000/-

##### **c. Silver**

Those students who score greater or equal to 3.70 and less than 3.90 CGPA out of 4.0 CGPA in their bachelor-level education are eligible for this scholarship. They will receive a scholarship of Rs. 2,50,000/-

## **9.2 Undergraduate Scholarship Scheme**

### **1. University Scholarship**

BIC offers scholarships for deserving students who have passed the scholarship examination conducted by Pokhara University.

### **2. Gold Medal Scholarship**

BIC refunds 100% of the tuition fees of the Gold Medalist who completes an undergraduate degree from BIC and is awarded the gold medal by the university.

### **3. Dean's List Scholarship - CGPA**

BIC refunds 20% of the tuition fees of the Dean-listed students who complete an undergraduate degree from BIC.

### **4. Merit-Based Scholarship (At the time of Admission)**

<b>Score</b>	<b>Discount</b>	<b>Amount</b>
A+	100%	Rs. 60,000
A	80%	Rs. 48,000
B+	60%	Rs. 36,000
B	50%	Rs. 30,000
C+	30%	Rs. 18,000
C	20%	Rs. 12,000

*Please note that these scholarships are subject to the specific eligibility criteria and terms and conditions set by BIC. The scholarship is effective from Fall intake 2023.*

*Annex*

**Annex I: Program-wise fee paying and scholarship students (2024)**

<b>1. Undergraduate Level</b>			
<b>Semester</b>	<b>Fee Paying</b>	<b>Scholarship</b>	<b>Total</b>
BBA 1st	96	14	110
BBA Finance 1st	31	1	32
BCSIT 1st	43	5	48
BHM 1st	41	1	42
BBA 3rd	77	10	87
BCSIT 3rd	39	5	44
BBA 5th	48	10	58
BBA-BI 5th	6	5	11
BCIS 5th	10	1	11
BBA 6th	63	10	73
BBA-BI 6th	18	3	21
BCIS 6th	18	2	20
BBA 7th	57	10	67
BBA-BI 7th	33	5	38
BCIS 7th	19	3	22
Total	591	80	671
<b>2. MBA</b>			
<b>Semester</b>	<b>Fee Paying</b>	<b>Scholarship</b>	<b>Total</b>
MBA 1st	27	3	30
MBA 2nd	8	3	11
MBA 4th	9	3	12
MBA 5th	4	3	7
Total	29	9	38



## Annex II: Program Wise Graduate Record Undergraduate

<b>BBA- 2009</b>	
<b>S.N.</b>	<b>Name of the Students</b>
1	Abishek Poudel Chhetri
2	Ashok Kadel
3	Bishnu Maya Gurung
4	Bishwabandhu Ghimire
5	Dipa Khaniya
6	Govind Dhakal
7	Navraj Gaire
8	Narayan Shrestha
9	Nashib Gurung
10	Nita Dhakal
11	Padam Pandey
12	Prasanta Nepal
13	Rabin Dhakal
14	Samriddhi Shrestha
15	Sharmila Kc
16	Shrijana Suwal
17	Sonam Lopchan Tamang
18	Sunita Gurung
19	Susmita Bhusal
20	Taranath Sapkota

<b>BBA-BI- 2009</b>	
<b>S.N.</b>	<b>Name of the Students</b>
1	Ambu Gyawali
2	Barsha Bhattra
3	Chitra Bdr. Mahato
4	Khageswar Lamichhane
5	Lochan Acharya
6	Nisha Sapkota
7	Nishu Shrestha
8	Prasanna Sapkota
9	Sajendra Shrestha
10	Sakuntala Kharal
11	Sarmila Aryal
12	Shanti Adhikari
13	Subas Karki
14	Tul Prasad Timilsina
15	Usha Nepali

<b>BBA- 2010</b>	
<b>S.N.</b>	<b>Name of the Students</b>
1	Achyut Neupane
2	Amar Shrestha
3	Ankit Neupane
4	Arati Lamichhane
5	Arjun Chapagain
6	Asmek Rayamajhi
7	Binay Kumar Shrestha
8	Bishnu Gautam
9	Deepa Sapkota
10	Kanchan Kandel
11	Kishan Khadka
12	Kshitij Adhikari

<b>BBA-BI- 2010</b>	
<b>S.N.</b>	<b>Name of the Students</b>
1	Abishek Krishana Pathak
2	Ajita Giri
3	Asha Mishra
4	Bibek Basnet
5	Bibek Sedhai
6	Binod Lamichhane
7	Diksha Kharel
8	Dinesh Gautam
9	Dristi Neupane
10	Elija Shrestha
11	Isha Subedi
12	Iswari Paudel

13	Milan Thapa Magar
14	Neha Amatya
15	Prabesh Karki
16	Pranju Shrestha
17	Pratiksha Khanal
18	Prem Nath Gaire
19	Puja Acharya
20	Puja Neupane
21	Rishikesh Acharya
22	Rubin Shrestha
23	Sabina Subedi
24	Shambhu Poudel
25	Sambida Ghimire
26	Sanam Dhakal
27	Sangita Rana
28	Shantosh Kumar Sharma
29	Seema Shrestha
30	Shankar Dhakal
31	Shirishma Dhakal
32	Shree Niwas Parajuli
33	Subash Dawadi
34	Suman Tamang
35	Susmita Ghimire
36	Yamananda Kandel
37	Bipana Sapkota

13	Jeevan Poudel
14	Jyoti Ghimire
15	Kabita Kandel
16	Laxmi Chapagain
17	Manish Pandey
18	Manish Thanait
19	Milan Dip Poudel
20	Neha Shrestha
21	Nirman Shahashankar
22	Nisha Rana Magar
23	Pramina Bogati
24	Pratiksha Sapkota
25	Priyanka Dahal
26	Rachana Khanal
27	Rajan Shrestha
28	Raju Acharya
29	Rashu Adhikari
30	Richa Bagale
31	Rupa Chhetri
32	Saraswati Pandey
33	Shakti Mahato
34	Shiva Raj Sharma
35	Shramita Bajracharya
36	Shrijana Bhusal
37	Sujan Shrestha
38	Sujata Poudel
39	Sushant Shrestha
40	Kiran Pd Bhattari

<b>BBA- 2011</b>	
<b>S.N.</b>	<b>Name of the Students</b>
1	Aamin Pradhan
2	Abhishek Giri
3	Amrit Gaira
4	Anshu Paudel
5	Anu Chaudhary
6	Anuj Shrestha
7	Arjun Lamsal
8	Arun Hamal

<b>BBA-BI- 2011</b>	
<b>S.N.</b>	<b>Name of the Students</b>
1	Alija Kharel
2	Ashish Gautam
3	Bishnu Bagale
4	Ganga Subedi
5	Jamuna Subedi
6	Mahesh Poudel
7	Pooja Tamang
8	Pooja Raut

9	Ashmita Dahal
10	Ayush Shrestha
11	Bibek Lamichhane
12	Brinda Neupane
13	Drishti Gautam
14	Himal Thapa
15	Jyotsna Pradhan
16	Karan Bahadur Chand
17	Luna Kafle
18	Madhav Neupane
19	Manjil Ghimire
20	Narendra Burlakoti
21	Pitamber Chapagain
22	Prakash Bhandari
23	Prakash Gautam
24	Prayash Neupane
25	Rabin Jung Shahi
26	Radha Mahato
27	Radha Neupane
28	Rama Neupane
29	Rita Mahato
30	Rupesh Shrestha
31	Sabina Sadaula
32	Sabita Dhital
33	Santosh Roka
34	Santosh Shrestha
35	Sarita Devi Sharma
36	Shiva Poudel
37	Shiva Rijal
38	Shreejana Basnet
39	Shristi Kafle
40	Sima Parajuli
41	Simona Nepal
42	Sirjana Limbu
43	Sita Aryal
44	Soniya Pradhan
45	Shrijana Aryal
46	Srijana Shrestha
47	Subash Neupane
48	Sudesh Bhandari

9	Prabina Dawadee
10	Puspa Kandel
11	Ramesh Gautam
12	Ranjana Kunwar
13	Ranjit Shrestha
14	Reshma Devi Shrestha
15	Rishi Parajuli
16	Ritu Dulal
17	Samikshya Poudel
18	Samjhana Gurung
19	Saphalta Ruwali
20	Sarmila Bhatta
21	Shramika Sulpe
22	Smriti Pradhan
23	Sonita Sharma
24	Soniya Pandey
25	Sujan Dhakal
26	Suprina Gurung
27	Suresh Jung Pandey
28	Nirma Pandey
29	Hemraj Wagle

49	Sujan Aryal
50	Sujan Pantha
51	Sujan Poudel
52	Sumitra Sigdal
53	Suraj Acharya
54	Susovan Dhungana
55	Suwas Ghimire
56	Utsab Bhatta
57	Yam Kumari Gurung
58	Yubaraj Regmee
59	Sushil Pathak

<b>BBA- 2012</b>	
<b>S.N.</b>	<b>Name of the Students</b>
1	Aakash Dawadi
2	Aastha Ranabhat
3	Achyut Krishna Bartaula
4	Akhilesh Baniya
5	Amir Tamang
6	Anjali Kandel
7	Archana Ghimire
8	Arjun Sedhaie
9	Arya Aryal
10	Ashok Pun
11	Ashu Gyawali
12	Asmita Sapkota
13	Bhim Bahadur Bayalkoti
14	Bibek Ghimire
15	Bijaya Ranabhat
16	Bimala Gautam
17	Binaya Acharya
18	Bipin Dhakal
19	Bishal Puri
20	Chiranjivi Dhakal
21	Dipesh Piya
22	Dol Raj Chapagain
23	Gauri Kumari Poudel
24	Gunjan Thapa
25	Kanchan Chapagain

<b>BBA-BI -2012</b>	
<b>S.N</b>	<b>Name of the Students</b>
1	Aaditya Pokhrel
2	Anisha Chapagain
3	Asha Shrestha
4	Bhumika Pathak
5	Bibek Pokharel
6	Bibita Lamichhane
7	Bikash Adhikari
8	Binima Subedi
9	Khemraj Lamichhane
10	Kiran Rauniyar
11	Manish Kumar Gupta
12	Mira Sapkota
13	Nirmal Pandey
14	Parikshit Kandel
15	Prativa Kharel
16	Raksha Lama
17	Reniska Bogati
18	Renu Kumari Thapa
19	Sajima Khadka
20	Sajisha Paudel
21	Samikshya Subedi
22	Sandesh Gautam
23	Sanjaya Budhathoki
24	Sarita Acharya
25	Shiwani Poudel

26	Khem Bahadur Dura
27	Krishan Subedi
28	Laxmi Chapagain
29	Manoj Dhungana
30	Milan Thing
31	Monika Subedi
32	Naresh Simkhada
33	Nawaraj Regmi
34	Niraj Shrestha
35	Pabitra Pokhrel
36	Pooja Khanal
37	Poonam Poudel
38	Pralhad Lamichhane
39	Prasannata Kunwar
40	Pratiksha Rijal
41	Rabin Dahal
42	Rachana Dhakal
43	Rakshak Shrestha
44	Rohit Chaudhary
45	Rupa Sharma
46	Sabita Neupane
47	Safal Ghimire
48	Salina Bhandari
49	Samiksha Sharma
50	Sandeep Acharya
51	Sandeep Adhikari
52	Sandeepa Dhakal
53	Sandesh Wagle
54	Sauran Rijal
55	Season Baral
56	Shankar Paudel
57	Shree Krishana Shrestha
58	Shrijana Neupane
59	Simran Khand
60	Sindhu Tiwari
61	Smriti Dallakoti
62	Srisha Ghimire
63	Sudip K.C
64	Sujan Pandey
65	Sujata Suwal

26	Subodh Kandel
27	Suraj Poudel
28	Suraksha Adhikari
29	Susma Koirala
30	Tulasi Lamichhane
31	Ushman Timilsina

66	Sunita Acharya
67	Sunita Lamichhane
68	Suresh Gurung
69	Shweta Bhattarai
70	Ujwal Poudel
71	Uma Rana
72	Usha Karki
73	Yubraj Thapa
74	Buddhi Chaudhary

<b>BBA- 2013</b>	
<b>S.N.</b>	<b>Name of the Students</b>
1	Abhaya Babu Paudel
2	Achyut Adhikari
3	Anita Rana Magar
4	Anupama Thapa Magar
5	Asim Subedi
6	Barsha Sharma
7	Bhumika Lamichhane
8	Bhuvan Tiwari
9	Bidhan Paudel
10	Binita Acharya
11	Binod Tamang
12	Dipa Sodari
13	Dipsan Subedi
14	Garima G.C
15	Kabita Kandel
16	Kabita Poudel
17	Kamal Subedi
18	Kamlesh Khanal
19	Kriti Shrestha
20	Kumesh Gurung
21	Manisha Kandel
22	Melina Mahato
23	Nikhil Shrestha
24	Nisha Chalise
25	Prabisha Thapaliya
26	Prasish Bhattarai
27	Priyanka Paudyal

<b>BBA-BI- 2013</b>	
<b>S.N.</b>	<b>Name of the Students</b>
1	Anjeeta Dhungana
2	Asmita Subedi
3	Binita Sapkota
4	Ek Narayan Neupane
5	Girish Adhikari
6	Kajal Gurung
7	Karishma Neupane
8	Laxmi Kumari Acharya
9	Manoj Dhakal
10	Muna Sapkota
11	Nisha Chhetri
12	Nisha Lamsal
13	Phaneshwor Thanait
14	Prakash Sapkota
15	Prakriti Karki
16	Rabina Shrestha
17	Reeta Kunwar
18	Roshan Subedi
19	Rubi Poudel
20	Sabina Bhusal
21	Sagar Thapa
22	Sagun Kunwar
23	Sandeep Paudel
24	Sanisha Gurung
25	Sazag Bhattarai
26	Shamita Karki
27	Sushma Karki

28	Purna Bahadur Dura
29	Radhika Kandel
30	Rajpal Silwal
31	Raksha Pradhan
32	Rama Aryal
33	Richa Khanal
34	Rita Chalise
35	Ritu Khanal
36	Sabita Adhikari
37	Sajana Chhetri
38	Sameer Prasad Ghimire
39	Sandip Ammai
40	Shirsha Tiwari
41	Shiva Shrestha
42	Shobha Bhujel
43	Srijana Chapagain
44	Srijana Sharma
45	Subidhya Lamsal
46	Sudha K.C
47	Sujan Poudel
48	Sujata Poudel
49	Sunita Shah
50	Sushmita Thapa
51	Swekshya Sharma

<b>BBA- 2014</b>	
<b>S.N.</b>	<b>Name of the Students</b>
1	Aakash Koirala
2	Aarati Subedi
3	Aashma Malla
4	Aashma Shrestha
5	Amisha Shiwakoti
6	Amrita Adhikari
7	Amrita Soti
8	Ananta Adhikari
9	Anil Devkota
10	Anu Shrestha
11	Anu Wagle
12	Anusha Ranabhat

<b>BBA-BI- 2014</b>	
<b>S.N.</b>	<b>Name of the Students</b>
1	Abha Shree Karna
2	Abishek Subedi
3	Ashu Tiwari
4	Aurora Thapa
5	Bhim Prasad Kalathoki
6	Bhishma Ale
7	Bibek Ghale
8	Biddya Sapkota
9	Gayatri Paudel
10	Gunjan Sharma
11	Kabita Magar
12	Manisha Chiluwal

13	Arati Sapkota
14	Ashok Lamsal
15	Ashok Shrestha
16	Asmita Bhujel
17	Bijayashree Gautam
18	Bina Kandel
19	Bipin Gurung
20	Bitusha Paudel
21	Dipesh Karki
22	Dipika Bhattarai
23	Divya Dhakal
24	Gorakh Jung Shah
25	Jenish Adhikari
26	Jenisha Mahat
27	Kabita Kafle
28	Kapil Rijal
29	Koshish Jung Lamichhane
30	Mamata Thapaliya
31	Merina Chaudhary
32	Nabin Sapkota
33	Nischal Acharya
34	Prabesh Nepal
35	Prashanna Adhikari
36	Pratiksha Sapkota
37	Pratikshya Paudel
38	Rabin Aryal
39	Ranjata Sharma
40	Riti Neupane
41	Samjhana Parajuli
42	Sangita Chaudhary
43	Santosh Kandel
44	Shilpa Gurung
45	Shreeya Lamsal
46	Srijana Bhandari
47	Sujan Raut
48	Sunil Khadka
49	Susma Lamsal
50	Susmita Poudel
51	Upama Shrestha

13	Manita Adhikari
14	Muskan Pandey
15	Nabina Dawadi
16	Nisha Neupane
17	Pankaj Regmi
18	Pratikshya Bartaula
19	Pursottam Subedi
20	Rahul Shrestha
21	Samikshya Dhakal
22	Sandhya Gautam
23	Shailesh Dhakal
24	Shradha Pradhan
25	Subiksha Neupane
26	Sujata Devkota
27	Sumitra Lamichhane
28	Susmita Devkota
29	Ujjwal Thapaliya
30	Ashmita Sapkota



<b>BBA- 2015</b>	
<b>S.N.</b>	<b>Name of the Students</b>
1	Aakarshan Poudel
2	Aayush Neupane
3	Alisha Joshi
4	Aman Wagle
5	Anamika Koirala
6	Anup Lamichhane
7	Apeksha Silwal
8	Ashish Timilsena
9	Ashish Thapa Magar
10	Bhawana Giri
11	Bibek Paudel
12	Bijaya Gurung
13	Bijaya Marasini
14	Bipana Thapa
15	Bishnu Pun
16	Biva Kandel
17	Chandrama Subedi
18	Dhan Bahadur Mahato
19	Dhiraj Mahato
20	Durga Devi Gurung
21	Ishwor Prasad Bhusal
22	Jyoti Kandel
23	Kabita Lamichhane
24	Kamala Lamichhane
25	Kamana Baral
26	Kanchan Lamichhane
27	Khem Narayan Mahato
28	Kusum Gurung
29	Manisha Tiwari
30	Megh Nath Regmi
31	Milan Bhandari
32	Mira Sharma
33	Niharika Thapa
34	Nisha Sapkota
35	Pooja Bhattarai
36	Pooja Poudel

<b>BBA-BI- 2015</b>	
<b>S.N.</b>	<b>Name of the Students</b>
1	Amrit Aryal
2	Anisha Sapkota
3	Antim Sedhain
4	Ashok Gurung
5	Asmita Dahal
6	Bhagrathi Kumari Chand
7	Bishal Chaudhary
8	Bishal Dumre
9	Chandra Kala Paudel
10	Deepti Basnet
11	Dipty Thapa
12	Kiran Devkota
13	Kusum Thapa Magar
14	Liza Ghimire
15	Najma Pun
16	Nirjala Pathak
17	Pabita Gurung
18	Parbat Chandra Neupane
19	Pukar Gurung
20	Rahul Agrawal
21	Reshma Chaudhary
22	Rojey Shrestha
23	Rojista Shrestha
24	Rojlin Lama
25	Sagari Kunwar
26	Sangeeta Gurung
27	Saurav Shrestha
28	Savyata Ruwali
29	Smita Dhakal
30	Swornim Lama
31	Sampada Poudel

37	Prakash Ghimire
38	Prashant Kandel
39	Puja Subedi
40	Pukar Shrestha
41	Rabin Shrestha
42	Rajdeep Ojha
43	Rajesh Shrestha
44	Raksha Sapkota
45	Rakshya Ranabhat
46	Ranju Poudel
47	Rekha Thapa
48	Rita Sapkota
49	Ritu Aryal
50	Sabina Dhakal
51	Sadiksha Dhakal
52	Sajiya Shrestha
53	Sandesh Baral
54	Sandhya Sapkota
55	Saurav Soti
56	Seemani Kshetri
57	Shovan Shrestha
58	Shreeya Acharya
59	Shrijana Mahato
60	Sijan Panta
61	Smita Upadhyay
62	Smriti Sapkota
63	Sonam Bangshi
64	Srijana Kunwar
65	Srijana Thapa
66	Sujana Shrestha
67	Sulav Mahat
68	Sunil Sapkota
69	Susmita Kumari Shrestha
70	Usha Raya Chhetri
71	Utsav Pandey
72	Bijaya Timilsena

<b>BBA- 2016</b>	
<b>S.N.</b>	<b>Name of the Students</b>

<b>BBA-BI- 2016</b>	
<b>S.N.</b>	<b>Name of the Students</b>

1	Aakriti Chalise
2	Aashish Bhusal
3	Aayush Pudasaini
4	Abinash Sapkota
5	Aditi Thapa Magar
6	Amit Dhakal
7	Anish Bhandari
8	Anisha Aryal
9	Anisha Kharel
10	Anjana Neupane
11	Anu Pun
12	Anupa Acharya
13	Ashma Sapkota
14	Ashutosh Acharya
15	Asmi Subedi
16	Asmita Hatuwal
17	Bhawana Bohora
18	Bibek Thapa
19	Bibek Bikram Chaudhary
20	Bikalpa Paudel
21	Binju Adhikari
22	Bipana Chaudhary
23	Bishnu Sharma
24	Bishnu Tamang
25	Dikshya Dhakal
26	Dikshya Ghimire
27	Dipa Chhetri
28	Ganga Bahadur Thapa
29	Gita Gautam
30	Ikshya Poudel
31	Inju Rawal
32	Khumraj Thapa
33	Kripa Lama
34	Manjyoti Sharma Devkota
35	Nabin Poudel
36	Narbada Goudel
37	Niraj Aryal
38	Nischaya K.C.

1	Anisha Khaniya
2	Anusha Timilsina
3	Asmita Dallakoti
4	Astha Adhikari
5	Bipin Dura
6	Birendra Shah
7	Bishal Pokhrel
8	Bishal Timilsina
9	Dipesh Bogati
10	Gaurav Neupane
11	Jyoti Poudel
12	Manish Kandel
13	Manisha Dhakal
14	Milan Pokhrel
15	Narayani Sapkota
16	Nikita Timilsina
17	Nischal Kandel
18	Pawanee Poudel Sharma
19	Prafullata Khanal
20	Prashanta Koirala
21	Prashidda Gaire
22	Pratima Aryal
23	Puspa Chaudhary
24	Rachana Shrestha
25	Rachin Sharma
26	Ranju Timilsina
27	Ravi Giri
28	Ruchi Poudel
29	Sabina Shrestha
30	Samiksha Sapkota
31	Samita Moktan
32	Sayal Pandey
33	Shikshya Kafle
34	Shiva Paudel
35	Shiwa Poudel
36	Sonu Kumar Kalwar
37	Subhash Aryal
38	Vivek Adhikari

39	Om Prakash Sapkota
40	Pabina Sharma
41	Pabitra Kafle
42	Pasang Tamang
43	Prabin Shrestha
44	Prakriti Sharma
45	Pramish Sapkota
46	Priyanka Devkota
47	Puja Kandel
48	Puza Dura
49	Rabikeshave Mishra
50	Rabina Ranabhat
51	Raksha Ghimire
52	Rubina Pathak
53	Sajeena Shrestha
54	Samiksha Mishra
55	Samiksha Poudel
56	Samir Acharya
57	Samira Sadaula
58	Sampada Piya
59	Sangam Pulami
60	Santosh Acharya
61	Santosh Adhikari
62	Santosh Bhattarai
63	Shila Neupane
64	Shirisha Shrestha
65	Shova Baral
66	Shubhechchha Paudel
67	Shusma Sharma
68	Sraddha Laxmi Rana Magar
69	Sujan Gurung
70	Sujan Sapkota
71	Suman Poudel
72	Sunita Subedi
73	Sushmita Kunwar
74	Udgam Paudel
75	Urmila Patel
76	Sajina Dahal
77	Bimala Sharma

<b>BBA- 2017</b>	
<b>S.N.</b>	<b>Name of the Students</b>
1	Aakriti Pandit
2	Aakriti Sharma
3	Aashish Adhikari
4	Aashish Dangol
5	Abisikha K.C.
6	Aakash Adhikari
7	Akriti Ray
8	Alina Rijal
9	Anish Rijal
10	Anisha Adhikari
11	Anuja Poudel
12	Arbin Baral
13	Arju Lama
14	Ashu Bhattarai A
15	Ashu Bhattarai B
16	Asmita Kandel
17	Bipana Koirala
18	Bishal Niure
19	Bishwa Pratik Basnet
20	Diksha Kandel
21	Diksha Kumari Jha
22	Dikshya Poudel
23	Gaurav Devkota
24	Grisma Dahal
25	Ishwar Kandel
26	Jyotsna Basnet
27	Kabita Kandel A
28	Kabita Kandel B
29	Kalpna Khattri
30	Kishan Subedi
31	Kriti Aryal
32	Kushal Babu Sapkota
33	Kushal Bhandari
34	Laxmi Lamichhane
35	Luna Sapkota

<b>BBA-BI- 2017</b>	
<b>S.N.</b>	<b>Name of the Students</b>
1	Aakriti Pathak
2	Anamol Jung G.C.
3	Anisha Nepal
4	Anupa Thapa
5	Archana Shrestha
6	Ashik Uperkoti
7	Barsha Kumari Gupta
8	Bishal Subedi
9	Bishnu Bhattarai
10	Deepa Dhakal
11	Dolraj Neupane
12	Gitanjali Rauniyar
13	Mahima Joshi
14	Manita Sapkota
15	Monalisa Malla
16	Neha Kumari Gupta
17	Nikita Shrestha
18	Nupur Rauniyar
19	Pinky Poudel
20	Pralochana Khanal
21	Pratikshya Regmi
22	Rachana Adhikari
23	Rashi Patwari
24	Rejina Paudel
25	Sabitri Sharma
26	Sabnam Chaudhary
27	Sadhana Acharya
28	Samikshya Khanal
29	Saugat Bhattarai
30	Saugat Raj Acharya
31	Smriti Shrestha
32	Sulav Neupane
33	Suraj Upadhyaya
34	Suresh Neupane
35	Sushmita Devkota

<b>BBA-BI- 2017</b>	
<b>S.N.</b>	<b>Name of the Students</b>
1	Amir Silwal
2	Anup Bhujel
3	Anupa Shrestha
4	Bishnu Prasad Dura
5	Nirmal Thapa Magar
6	Sabhyata Bashyal
7	Sagar Sedhai
8	Samiksha Rana
9	Shirisa Bhattarai
10	Sonam Neupane
11	Subash Khatiwada
12	Sunil Chitauré Magar
13	Sushmita Gurung
14	Yojana Baral

36	Manju Kafle
37	Nabin Guragai
38	Narayan Pandey
39	Nishant Lama
40	Pramila Adhikari
41	Pratik Chalise
42	Pratima Pandey
43	Puja Shrestha
44	Rahul Kumar Arya
45	Regmika Dura
46	Riya Joshi
47	Rohit Sapkota
48	Sabina Panta
49	Sagar Neupane
50	Samiksha Bhattarai
51	Samiksha Uparkoti
52	Samikshya Ghimire
53	Sangkriti Poudel
54	Sangpu Shakya
55	Sapana Ramdam
56	Sarila Gautam
57	Saugat Aryal
58	Saurav Sapkota
59	Sejal Shrestha
60	Shradhda Bista
61	Simran Panta
62	Spriha Ghimire
63	Srijana Khanal
64	Subash Paudel
65	Sunita Subedi
66	Surakshya Adhikari
67	Sushant Gautam
68	Sushmita Sharma
69	Susma Sharma
70	Susmita Kshetri
71	Susmita Kunwar
72	Susta Sharma
73	Swastika Acharya
74	Tila Sharma

36	Susma Shrestha
37	Susmita Ghale
38	Swastika Aryal
39	Tek Prasad Dhakal

<b>BBA- 2018</b>	
<b>S.N.</b>	<b>Name of the Students</b>
1	Aakriti Ojha
2	Abhishek B K
3	Adarsha Kandel
4	Anita Kumari Tamang
5	Anjali Jhawar
6	Anjila Tamang
7	Ankita Pandey
8	Anu Shrestha
9	Anuja Tamang
10	Anupriya Shrestha
11	Anurodh Chapagain
12	Ashish Acharya
13	Ashish Soti
14	Ashish Raj Bhandari
15	Asim Bagale
16	Asmita Sapkota
17	Bibash Dawadi
18	Bibek Kumar Yadav
19	Bindu Dhakal
20	Binita Dhakal
21	Bishnu Kumari Sharma
22	Bishwash Shrestha
23	Bodhraj Puri
24	Buddhi Sagar Neupane
25	Dipesh Subedi
26	Isha Gaire
27	Ishan Gaire
28	Janwee Joshi
29	Khemraj Kafle
30	Kripa Panta
31	Krishna Kumari Paudel
32	Liza Shrestha
33	Madhav Chapagain
34	Manisha Sapkota
35	Monica Subedi

<b>BBA-BI- 2018</b>	
<b>S.N.</b>	<b>Name of the Students</b>
1	Aaishma Gurung
2	Anisha Dhakal
3	Ayush Malla
4	B Indira Kumari
5	Binamra Bhattarai
6	Hira Kumari Mahato
7	Mandira Adhikari
8	Pooja Bishwakarma
9	Prabin Niure
10	Pramisha Kandel
11	Pratiksha Dawadi
12	Prerana Subedi
13	Priska Tamang
14	Priya Dhakal
15	Pursotam Pandey
16	Samikshya Rijal
17	Sandeep Bartaula
18	Sangya Timilsina
19	Sanjita Devkota
20	Sanyukta Kandel
21	Shreya Poudel
22	Sima Ghimire
23	Smriti Chaudhary
24	Soniya Gaire
25	Sugam Aryal
26	Sujita Acharya
27	Sujita Nepal
28	Sukriti Raut
29	Swasthika Sapkota
30	Swastika Subedi
31	Tilasha Giri

<b>BBA-BI- 2018</b>	
<b>S.N.</b>	<b>Name of the Students</b>
1	Apekshya Ghimire
2	Asmita Subedi
3	Bibek Basnet
4	Bijay Ghimire
5	Bishal Kandel
6	Kaushal Raj Mishra
7	Pratina Poudel
8	Swaratmik Dibasha Khanal
9	Udhbhav Pandit

36	Muna Sapkota
37	Narbada Marahatta
38	Nisha Kaphle
39	Nishan Kandel
40	Nishesh Poudel
41	Prabesh Poudel
42	Prasanna Devkota
43	Prayukta Shrestha
44	Puja Bogati
45	Ram Kumari Gurung
46	Riya Deep Ojha
47	Sachina Shrestha
48	Sadiksha Sedhai
49	Sajana Shrestha
50	Saksham Adhikari
51	Sandesh Lamichhane
52	Santosh Bhattarai
53	Sarita Gurung
54	Satyartha Shrestha
55	Saugat Paudel
56	Shachika Shrestha
57	Shiksha Rana
58	Shila Ghimire
59	Shiwani Pudasaini
60	Smarika Shrestha
61	Smriti Bartaula
62	Soniya Pudasaini
63	Subha Lamichhane
64	Subikshya Shrestha
65	Sujata Neupane
66	Sumi Shrestha
67	Swekshya Basnet
68	Sweta Kandel
69	Jasmine Kharel



<b>BBA- 2019</b>	
<b>S.N.</b>	<b>Name of the Students</b>
1	Aashika Ghimire
2	Anup Dallakoti
3	Arati Ghimire
4	Ashlesha Regmi
5	Avishek Adhikari
6	Bibek Kumar Gurung
7	Bibek Parajuli
8	Bijaya Kandel
9	Bijaya Kharel
10	Binaya Poudel
11	Bishika Acharya
12	Chandan Jaiswal (PU)
13	Daya Sagar Bakbal
14	Dhurba Sapkota
15	Dikshya Neupane
16	Dipesh Ale
17	Divya Pandey
18	Dristy Adhikari
19	Ebisha Poudel
20	Garima Rai
21	Girish Devkota
22	Jamuna Khanal (PU)
23	Jharana Devkota
24	Jyoti Chapagain
25	Kamal Basyal
26	Kamala Wagle (PU)
27	Kanchan Dhakal
28	Kapil Subedi (PU)
29	Kavita Sharma
30	Kiran Adhikari
31	Kiran Gurung
32	Kushma Devkota (PU)
33	Mamata Bhandari
34	Manisha Kandel

<b>BBA-BI- 2019</b>	
<b>S.N.</b>	<b>Name of the Students</b>
1	Alisha Khatri Kshetri
2	Anjali Dhakal
3	Asbin Dawadi
4	Ashika Ghale
5	Bijay Acharya
6	Binita Rimal
7	Bishnu Gurung
8	Dipesh Chandra Neupane
9	Gita Sapkota
10	Ishwor Sapkota
11	Kapil Khanal
12	Nausad Alam
13	Neetisha Sedai
14	Nirjala Sunari Thapa Magar
15	Nischal Bhatta
16	Nista Phuyal
17	Nitesh Kumar Singh
18	Prabina Malla
19	Prajila Shrestha
20	Prakriti Kandel
21	Puspanjali Adhikari
22	Ranju Bhatta
23	Rochak Poudel
24	Rohini Gurung
25	Sabina Poudel
26	Sagar Kandel
27	Sagun Acharya
28	Samjna Kandel
29	Shiksha Aryal
30	Shila Bhusal
31	Sujata Shrestha
32	Thaneswor Poudel
33	Ujjwal Kandel
34	Pooja Sharma

<b>BBA-BI- 2019</b>	
<b>S.N.</b>	<b>Name of the Students</b>
1	Aadarsha Adhikari
2	Anjali Chaudhary
3	Bigyan Chapagain
4	Bimal Giri
5	Enjila Bagale
6	Hari Sharma
7	Jal Bahadur Tamang (PU)
8	Pratham Khanal
9	Rajani Shrestha
10	Sabanam Pangen Chhetri (PU)
11	Saksham Pathak (PU)
12	Sandesh Shrestha

35	Manisha Thapa
36	Manju Devi Neupane
37	Namrata Gurung
38	Nilam Ghale
39	Niraj Kandel
40	Nisha Baskota
41	Pooja Bhusal
42	Prabesh Poudel
43	Pradip Pun
44	Pramish Rasali
45	Prashanna Bhattarai
46	Prashant Laudhari
47	Pratima Adhikari
48	Pratima Thapa(PU)
49	Rabina Bhatta
50	Rajaram Acharya (PU)
51	Ramu Subedi (PU)
52	Rejin Bhandari
53	Richa Khadka
54	Ritishma Aryal
55	Roshan Yadav(PU)
56	Sameer Gurung
57	Sampada Pandey
58	Samyamta Sherchan
59	Sandesh Shrestha
60	Sandesh Subedi Upadhya
61	Sangram Aryal
62	Sarish Shrestha
63	Shejal Adhikari
64	Shila Adhikari
65	Shraddha Regmi
66	Smriti Dahal
67	Smriti Shrestha
68	Soshita Ghimire
69	Sulochana Adhikari
70	Swastik Bista
71	Swastika Magar
72	Sweeta Bhandari
73	Ushnata Pakhrin
74	Sarbesh Lohani


### Annex III: Program Wise Graduate Record Postgraduate

MBA 2017 Spring	
S.N.	Name of the Students
1	Amir Tamang
2	Arjun Lamsal
3	Binima Subedi
4	Drishti Gautam
5	Durgesh Nandani Sharma
6	Jyoti Poddar
7	Karan Bahadur Chand
8	Krishna Kumar Paul
9	Mina Baral
10	Prakriti Kandel
11	Roshan Kumar Gupta
12	Sajisha Paudel
13	Sambhu Paudel
14	Sanjaya Pudasaini
15	Saurav Baral
16	Sristy Pokhrel
17	Sudan Parajuli
18	Sudeep Parajuli
19	Sunil Kumar Chudara
20	Suraj Acharya
21	Sushil Kafle
22	Suveksha Bhattra

MBA 2017 Fall	
S.N.	Name of the Students
1	Aakash Dawadi
2	Bikram Adhikari
3	Birendra Bahadur Hitan
4	Chiranjivi Dhakal
5	Kiran Dahal
6	Manoj Poudel
7	Melina Adhikari
8	Nama Raj Adhikari
9	Nishanta Lamichhane
10	Pawan Poudel
11	Puja Roka Kshetri
12	Romanch Kandel
13	Salina Bhandari
14	Samjhana Gurung
15	Sandesh Wagle
16	Sangita Lamsal
17	Sanjit Kumar Poudel
18	Santosh Shrestha
19	Saphalta Ruwali
20	Talash Khand

MBA 2018 Spring	
S.N.	Name of the Students
1	Alija Kharel
2	Aprameya Khakurel
3	Asmita Khatri
4	Ayushi Bansal
5	Binod Tamang
6	Kabita Aryal

MBA 2018 Fall	
S.N.	Name of the Students
1	Anupam Bandhu Poudel
2	Arpan Babu Adhikari
3	Bishnu Prasad Khanal
4	Hari Shrestha
5	Ishwar Kumar Shrestha
6	Jagadish Panta

7	Kamal Subedi
8	Kumesh Gurung
9	Manisha Kandel
10	Mustapha Alam
11	Parul Agrawal Chachan
12	Puja Kumari Yadav
13	Rabindra Lamsal
14	Ritu Thapa Magar
15	Roshan Subedi
16	Sabita Kharel
17	Sagar Karki
18	Sagar Thapa
19	Sandeep Paudel
20	Sauran Rijal
21	Subidhya Lamsal
22	Sujana Bhandari
23	Susmita Lama
24	Usha Kumari Sedhain

7	Krishna Datta Ghimire
8	Kriti Shrestha
9	Lona Subedi
10	Manoj Dhakal
11	Parbati Lamsal
12	Prabisha Thapaliya
13	Pratibha Adhikari
14	Raj Kumar Sapkota
15	Raj Kumar Shahi
16	Rama Aryal
17	Sameer Prasasdh Ghimire
18	Samikshya Adhikari
19	Shiva Shrestha
20	Subhash Neupane
21	Sujata Bhandari
22	Suraj Bisunke
23	Surakshya Poudel

MBA 2019 Spring	
S.N.	Name of the Students
1	Abha Shree Karna
2	Ankit Chhetri
3	Ankit Sharma Poudel
4	Ashmita Sapkota
5	Ayush Shrestha
6	Bhuvan Tiwari
7	Bijyashree Gautam
8	Dipesh Gautam
9	Dipesh Karki
10	Dolendra Sharma
11	Gunjan Sharma
12	Jeevan Adhikari
13	Jenish Adhikari
14	Kabita Kafle
15	Laxman Pandey
16	Muskan Pandey
17	Prajwal Shrestha
18	Prashanna Adhikari

MBA 2019 Fall	
S.N.	Name of the Students
1	Aashma Shrestha
2	Ajay Shrestha
3	Anusha Bhattarai
4	Arun Shrestha
5	Ashim Regmi
6	Asmita Bhujel
7	Biddya Sapkota
8	Bikash Biswokarma
9	Bitusha Paudel
10	Hemanta Rijal
11	Mamata Thapaliya
12	Nabin Kandel
13	Rabina Shakya
14	Rita Mahato
15	Sakar Lama
16	Samjhana Parajuli
17	Sanjib Giri
18	Sujata Khanal

19	Prasiddha Khanal
20	Prerana Joshi
21	Rajan Paudel
22	Ranjana Sibakoti
23	Sabina Prawin
24	Sadikshya Sadaula
25	Sumina Pradhan
26	Sunita Poudel
27	Suresh Pari
28	Utsav Sapkota

19	Suraj Poudel
20	Umesh Kumar Sah

MBA 2020 Spring	
S.N.	Name of the Students
1	Anjali Upreti
2	Anju Suyal
3	Asha Chalise
4	Dhurba Paudel
5	Manisha Chiluwal
6	Manisha Tiwari
7	Nabin Tamang
8	Priya Thapa
9	Rajdeep Ojha
10	Ranju Poudel
11	Roshan Sapkota
12	Sabina Subedi
13	Sabnam Shrestha
14	Sanju Marahatta
15	Shashi Kala Sapkota
16	Shirishma Karki

MBA 2020 Fall	
S.N.	Name of the Students
1	Aaditya Pokhrel
2	Aakarshan Poudel
3	Aarati Ghimire (PU)
4	Anita Hamal(PU)
5	Anita Sapkota
6	Ashok Gurung
7	Barsha Bhattarai
8	Bipin Gurung
9	Grishma Baral Poudel
10	Juli Yadhab (PU)
11	Nabin Sapkota
12	Prabin Rijal
13	Pravas Chudal
14	Rahul Agrawal
15	Rajeev Dhakal
16	Rojey Shrestha
17	Sandesh Dhakal
18	Santosh Kandel
19	Saroj Panta
20	Shree Krishna Bhetwal
21	Sijan Panta
22	Swarnim Ghimire

MBA 2021 Spring	
S.N.	Name of the Students

MBA 2021 Fall	
S.N.	Name of the Students

1	Bashu Chalise
2	Nibriti Bhandari
3	Pankaj Kumar Yadav
4	Richa Shrestha
5	Santosh Subedi

1	Anjana Neupane
2	Gauri Mishra
3	Manisha Dhakal
4	Neru Gurung
5	Prashidda Gaire
6	Puspa Chaudhary
7	Rijan Gurung
8	Samira Sadaula
9	Sandip Paudel
10	Santosh Acharya
11	Sujan Gurung
12	Sushmita Kunwar

MBA 2022 Spring	
S.N.	Name of the Students
1	Deepak Kumar Chaudhary(PU)
2	Merina Poudel

S.N.	Name of the Students
1	Jyoti Poudel
2	Sudip Pangen (S)
3	Sujit Kumar Libi

### Annex IV. Placement Record till to date

Batch 2017 Spring			
S.N	Name of the Organization	Organization	Designation
1	Krishna Kumar Paul	Nepal Rastra Bank	Assistant Director
2	Roshan Kumar Gupta	Digital Plaza	Proprietor
3	Sajisha Paudel	ICFC Finance Ltd	Officer
4	Sanjaya Pudasaini	Prabhu Mahalaxmi Life Insurance Ltd	Branch Manager
5	Saurav Baral	Federal Reinsurance Brokers Limited	Research Analyst
6	Sudeep Parajuli	Sanima Bank Ltd	Officer
7	Sunil Kumar Chudara	Nepal Bank Ltd	Officer
Batch 2017 Fall			
S.N	Name of the Organization	Organization	Designation
1	Aakash Dawadi	Mankamana Group of Companies	Account and Finance Manager
2	Birendra Bahadur Hitan	Citizen International Bank	Officer
3	Melina Adhikari	Boston Int'l College	Senior Lecturer
4	Pawan Poudel	Apex Academy	lecturer
5	Puja Roka Kshetri	NIMBA Bank	officer
6	Salina Bhandari	Machhapuchhre Bank	officer
7	Sandesh Wagle	Bharatpur Metro	officer
8	Santosh Shrestha	Bhajju Chulo	Proprietor
Batch 2018 Spring			
S.N	Name of the Organization	Organization	Designation
1	Aprameya Khakurel	Boston Int'l. College	ECA & Placement Coordinator
2	Ayushi Bansal	Rajesh Hardware Pvt Ltd	Proprietor
3	Kumesh Gurung	Laxmi Sunrise Bank Ltd	officer
4	Manisha Kandel	Milan Hardware Center	Proprietor
5	Rabindra Lamsal	Nepal Life Insurance Pvt Ltd	Officer
6	Sagar Karki	Better Chitwan   ECON	Proprietor Convener
7	Sandeep Paudel	Rojan Construction Pvt Ltd	Officer
8	Sauran Rijal	IME Motors Ashok Leyland Nepal	Assistant Marketing Manager
Batch 2018 Fall			

S.N	Name of the Organization	Organization	Designation
1	Anupam Bandhu Poudel	Coca Cola Beverages Nepal	Sr. Executive Channel Marketing
2	Arpan Babu Adhikari	Shree Durga Saraswati Supplier	Managing Director
3	Bishnu Prasad Khanal	NIC ASIA Bank Ltd	Branch Manager
4	Hari Shrestha	Rastriya Banijya Bank Ltd	Assistant Manager
5	Ishwar Kumar Shrestha	Chitwan Rhino Builder Pvt Ltd	Director
6	Jagadish Panta	Pathsala Education Foundation	Coordinator
7	Krishna Datta Ghimire	Citizen International Bank Ltd	officer
8	Kriti Shrestha	Citizen International Bank Ltd	officer
9	Prabisha Thapaliya	Best Montessori Pre school	Principal
10	Raj Kumar Sapkota	Forbes College	Head of Department Bcsit
11	Raj Kumar Shahi	NIC ASIA Bank Ltd	Officer
12	Sameer Prasad Ghimire	Saradpur Higher Secondary School	Lecturer
13	Shiva Shrestha	Muktinath Bikash Bank Pvt Ltd	Officer
14	Suraj Bisunke	Rastriya Banijya Bank	IT Assistant
15	Surakshya Poudel	Boston International College	Lecturer

#### Batch 2019 Spring

S.N	Name of the Organization	Organization	Designation
1	Ankit Sharma Poudel	Manjushree Finance	Branch Manager - Gaidakot
2	Ayush Shrestha	Akrista Enterprises	Proprietor
3	Bhuvan Tiwari	Aryan Production	CEO
4	Dipesh Gautam	Apollo Feeds, Apollo Paints	Managing Director
5	Dipesh Karki	SF Water Drilling and Construction P Ltd	Accountant
6	Dolendra Sharma	Janachetana Saving and Credit Cooperatives	CEO
7	Jenish Adhikari	JK Nirman Sewa	Proprietor
8	Prajwal Shrestha	Fonepay	Management Trainee
9	Prerana Joshi	NIC ASIA Bank Pvt Ltd	Officer
10	Rajan Paudel	Manjushree Finance Pvt Ltd	Branch Manager
11	Ranjana Sibakoti	NIMB Ltd	Officer
12	Sabina Prawin	NMB Ltd	Officer
13	Sumina Pradhan	Nepal Rastra Bank	Assistant
14	Sunita Poudel	Kamana Sewa Bikas Bank Ltd	Officer
15	Suresh Pari	Nepal Bank Ltd	Assistant Manager



16	Utsav Sapkota	Nexus Tech Solution	Founder
<b>Batch 2019 Fall</b>			
S.N	Name of the Organization	Organization	Designation
1	Ajay Shrestha	Siddhartha Bank Limited	Officer
2	Anusha Bhattarai	Om Shiva Saw Mill and Veneer Udyog	Account Officer
3	Arun Shrestha	Citizen International Bank Ltd	Officer
4	Ashim Regmi	Commission for the Investigation of Abuse of Authority	Officer
5	Asmita Bhujel	Siddhartha Bank Limited	Officer
6	Bikash Biswokarma	Dalit Yuwa Jagaran Manch Nepal	Administrator
7	Bitusha Paudel	Global IME Bank Ltd	Officer
8	Rita Mahato	ICFC Finance Ltd	Officer
9	Sakar Lama	Bharatpur Metropolitan Office	Engineer
10	Samjhana Parajuli	UTEC College	Accountant
11	Sujata Khanal	Utpreerana Saving and Credit Cooperative Ltd	Officer
12	Umesh Kumar Sah	Rastriya Banijya Bank	Assistant
<b>Batch 2020 Spring</b>			
S.N	Name of the Organization	Organization	Degnisation
1	Manisha Tiwari	Danfe Solution Pvt Ltd	Officer
2	Rajdeep Ojha	Malewa Banquet Pvt Ltd	Managing Director
3	Roshan Sapkota	StudyQuest Education Pvt Ltd	CEO
<b>Batch 2020 Fall</b>			
S.N	Name of the Organization	Organization	Designation
1	Aaditya Pokhrel	Grace International Group Pvt Ltd	Operation Officer
2	Anita Sapkota	Boston International College	Lecturer
3	Ashok Gurung	Global IME Bank Limited	Officer
4	Barsha Bhattarai	Global Agro Product Pvt. Ltd	Officer
5	Grishma Baral Poudel	Nabil Bank Limited	Assistant
6	Juli Yadhab (PU)	Metropolitan design and Construction	Designer
7	Prabin Rijal	NMB Bank Ltd	Officer
8	Pravas Chudal	Thimura Resort	General Manager
9	Rahul Agrawal	Maruti Logistics and Warehousing	Managing Director
10	Rajeev Dhakal	NABIL Investment Banking Ltd	Officer
11	Saroj Panta	PTE/OET	Test Administrator
12	Shree Krishna Bhetwal	Muktinath Bikas Bank Ltd	Officer

13	Swarnim Ghimire	PTE/OET	Test Instructor
<b>Batch 2021 Spring</b>			
S.N	Name of the Organization	Organization	Designation
1	Bashu Chalise	Siddhartha Bank Limited	Officer
2	Pankaj Kumar Yadav	Pokhara University	Officer
<b>Batch 2021 Fall</b>			
S.N	Name of the Organization	Organization	Designation
1	Deepak Gautam	Fly You Nepal	Language Instructor
2	Gauri Mishra	Design Studio	Accountant
3	Manish Kandel	Boston International College	IT Officer
4	Neetu Bhandari	Star Collection	Owner
5	Prashant Koirala	Global IME Bank	Junior Assistant
6	Ranjata Sharma	Belna Restaurant/UK for Study	Owner
7	Sandip Paudel	Sunmai Spring	Business Development
8	Santosh Acharya	Siddhartha Bank	Junior Assistant
9	Narbada Goudel	Nepal Feed	Accountant
<b>Batch 2022 Spring</b>			
S.N	Name of the Organization	Organization	Designation
1	Pritam Rijal	Rijal Foods	Product Developer
2	Bishesh Vishwokarma	Forbes College, Aaramba College	Teacher
<b>Batch 2022 Fall</b>			
S.N	Name of the Organization	Organization	Designation
1	Bishnu Bhattarai	Furniland	Accountant
2	Jyoti Poudel	Om Shree Suppliers	Owner
3	Nisha Patwari	Buiness	Self
4	Sabitri Sharma	Laxmi Sunrise Bank	Junior Assistant
5	Sagar Lamichhane	Expert Education	Head Consellor
6	Saughat Shrestha	Business - Petrol Pump	Owner
7	Shradhda Bista	Boston International College	Research Assistant

### Annex V: Undergraduate Placement Record

S.N	Name of the Organization	Organization	Designation
1	Aaditya Pokhrel	Grace International Consultancy	Officer
2	Aashish Dangol	Own Business (Hardware)	Head
3	Achyut Neupane	Insurance Company	Branch Manager
4	Adarsha Kandel	Orchid Electronics, Sitapaila, Kathmandu	Officer
5	Amir Silwal	Pagoda Labs	Project Manager
6	Amrit Gaire	Rastriya Banijya Bank Ltd	Asst. Manager
7	Anamika Koirala	Pokhara University	Accountant
8	Anjali Jhavar	Ankuram Academy	Teacher
9	Anu Shrestha	Australia	N/A
10	Anup Bhujel	Pokhara International Airport	System and Network Administrator
11	Anupa Shrestha	Security Pal Inc.	Security Research Analyst
12	Ashik Uperkoti	Grace International Consultancy	Officer
13	Ashish Gautam	United Liquor Pvt Ltd.	Accounting & Fiance Officer
14	Ashmita Dahal	Nepal Rastra Bank	Assistant Director
15	Bhumika Pathak	Sunrise Bank Ltd.	Officer
16	Binita Dhakal	INIT	CEO
17	Bipin Dhakal	NIC Asia Bank Ltd.	Officer
18	Bipin Dura	Kumari Bank Ltd.	Officer

19	Bodhraj Puri	Action Nepal	Data Collector
20	Buddhi Sagar Neupane	Foodmandu	Sales and Operations
21	Chandrama Subedi	Maha Laxmi Bikash Bank Ltd	Officer
22	Dikshya Ghimire	Global IME Bank Ltd.	Officer
23	Dinesh Gautam	Himalayan Bank Ltd	Officer
24	Divya Dhakal	Australia	N/A
25	Garima G.C	Siddhartha Bank Ltd.	Officer
26	Gayatri Paudel	UK	N/A
27	Girish Devkota	Dynamic Technosoft	Business Development Executive
28	Govind Dhakal	Siddhartha Bank Limited	Branch Manager
29	Jenisha Mahat	Australia	N/A
30	Jyoti Poudel	Own Business- (shoes House)	Head
31	Kamal Subedi	Australia	IT officer
32	Kapil Khanal	Khata Academy	Analyst
33	Kaushal Shrestha	Trishul Security	Manager
34	Kiran Devkota	Everest Bank Limited	Officer
35	Krishna Kumari Paudel	VYCCU Saving And Credit Cooperative Ltd.	Finance Assistant
36	Kushma Devkota	Yamaha Nepal	Sales
37	Madhav Neupane	Self Business	Head
38	Manisha Tiwari	Global IME Bank Ltd.	Officer
39	Manita Sapkota	Siddhartha Bank Ltd	Officer

40	Mira Sapkota	NIC Asia Ltd.	Officer
41	Muna Sapkota	Kumari Bank, Narayamgarh	Officer
42	Naushad Alam	Dynamic Technosoft	Business Development Executive
52	Nisha Lamsal	Shangrila Bank, Narayamgarh	CST
44	Nitesh Kumar Singh	Boston International College	BIC Startups
45	Pooja Raut	Shangrila Development Bank Ltd.	Officer
46	Prabisha Thapaliya	The Best Montessori	Principal
47	Prakash Gautam	Kamana Bikash Bank Ltd.	Officer
48	Pralhad Lamichhane	Manjushree Finance	Officer
49	Pratima Pandey	Siddhartha Bank Ltd.	Officer
50	Prem Nath Gaire	Boston International College	Head of BIC Startups
51	Rabikeshave Mishra	Nic Asia Ltd.	Officer
52	Rabina Bhatta	Bottlers Nepal Terai Ltd.	Sales
53	Rajdeep Ojha	Malewa Party Palace, Bharatpur	Manager
54	Ritu Aryal	Canada	N/A
55	Sabina Sadaula	Hetauda School of Management	Job placement
56	Sabitri Sharma	Sunrise Laxmi Bank	Officer
57	Sabnam Pangoeni Chhetri	Security Pal Nepal	Security Analyst
58	Sameer Prasad Ghimire	Saradpur Secondary School	Teacher
59	Samiksha Rana	Security Pal Nepal	Officer
60	Samiksha Sapkota	Prabhu Bank Ltd	Officer

61	Samjhana Parajuli	UTech College	Admin
62	Samriddhi Shrestha	Siddhartha Bank Limited	Senior Officer
63	Sandeep Paudel	Rojan Nirman Sewa Pvt. Ltd.	Founder
64	Sangpu Shakya	Canada	N/A
65	Santosh Acharya	Siddhartha Bank Ltd.	Officer
66	Santosh Shrestha	Own business-Bhajju Chull	Head
67	Shikshya Kafle	Expert Visa Service	Counselor
68	Shikshya Khanal	Suvidha Assurance	HR
69	Shiwa Poudel	Expert Visa Service	Counselor
70	Shradhda Bista	Asst. Research	Boston International College
71	Shramika Sulpe	Agricultural Development Bank	BM
72	Shrijana Bhusal	Small Heaven School	Admin
73	Shristi Kafle	NIC Asia Bank	Officer
74	Smriti Bartaula	Suvidha Assurance	HR
75	Soniya Gaire	Suvidha Assurance	HR
76	Srijana Shrestha	Sanima Bank Ltd.	Officer
77	Subash Khatiwada	Invoff Limited	Backend Developer
78	Subhash Aryal	Aryal Bakhara Farm	MD
79	Sudha K.C	Sunrise Bank Ltd.	Officer
80	Sujan Kandel	Sef-Business	Head
81	Sushmita Gurung	Victory Nihon Educational Consultancy	Documentation Officer/Graphic designer
82	Susmita Bhusal	Manjushree Finance	Branch Manager

83	Syaron Chhetri	Vishal Groups	Sales
84	Upama Shrestha	Laxmi Sunrise Bank Ltd.	CST
85	Ushnata Pakhrin	Karkhana	Business Development Executive
86	Vivek Adhikari	Furniland Pvt. Ltd.	MD
87	Yamananda Kandel	Self-employed	Hardware
88	Yubaraj Regmee	Sanima Bikash Bank	Loan Officer

### Annex VI: Non-Teaching Staffs

SN	Name of Staff	Qualification	Appointment Type	Designation	Level	Joint Date
1	Asmita Thapa	BBS	Full Time	Admin Officer	Level 1	16-Jun-2019
2	Deepak Raj Neupane	BBS	Full Time	Admin Officer	Level 3	1-Mar-2010
3	Manish Kandel	BBA-BI	Full Time	Admin Officer	Level 1	1-Aug-2022
4	Pabitra Neupane	MBS	Full Time	Admin Officer	Level 1	12-Jan-2021
5	Shankar Bhusal	Degree(Economics)	Full Time	Admin Officer	Level 1	20-Sep-2020
6	Sheela Khatri	BBS	Full Time	Admin Officer	Level 1	6-Nov-2019
7	Sudha Bhattarai	M Ed	Full Time	Admin Officer	Level 1	15-Nov-2010
8	Bodh Raj Puri	BBA	Full Time	Assit Admin Officer	Level 2	
9	Nitesh Kumar Singh	BBA-BI	Full Time	Assit Admin Officer	Level 2	Oct.31,2024
10	Anu Tamang	BBS	Full Time	Asst. Admin Officer	Level 3	18-Mar-2018
11	Bishnu Bahadur Phuyal	PCL	Full Time	Asst. Admin Officer	Level 2	14-May-2024
12	Mina Chhetri	Plus 2	Full Time	Asst. Admin Officer	Level 3	12-Sep-2012
13	Pratik Mahato	Diploma in Comp. Eng	Full Time	Asst. Admin Officer	Level 2	24-Apr-2022
14	Sharaddha Bista	BBA	Full Time	Asst. Admin Officer	Level 3	Dec.31,2023
15	Srijana Pokharel	BBS	Full Time	Asst. Admin Officer	Level 2	22-May-2022



16	Bishal Kandel	BCIS	Full Time	Asst. Admin Officer	Level 2	10-Jun-2024
17	Deepa Mahato	Literate	Full Time	Canteen Attendant		2-Sep-2024
18	Nira Mahato	Literate	Full Time	Canteen Attendant		2-Sep-2024
19	Shanti Mahato	Literate	Full Time	Canteen Attendant		2-Sep-2024
20	Dhan Bahadur Kumal	Literate	Full Time	Commis Chef		11-Sep-2024
21	Muna Chaudhary	Literate	Full Time	Commis Chef		2-Sep-2024
22	Balaram Magar	Literate	Full Time	Commis Chef		25-Sep-2024
23	Rajesh Ghimire	MBS	Full Time	Finance Officer		9-Sep-2022
24	Prem Bahadur Thapa	Literate	Full Time	Head Cook		11-Sep-2024
25	Prabash Panta	Plus 2	Contract	Intern		
26	Ganapati Ojha	Literate	Full Time	Office Attendant	Level 5	20-Oct-2009
27	Goma Sharma	Literate	Full Time	Office Attendant	Level 3	25-Nov-2009
28	Govinda Raj Sedai	Literate	Full Time	Office Attendant	Level 2	14-Mar-2024
29	Hari Bahadur Magar	Literate	Full Time	Office Attendant	Level 2	21-Jul-2023
30	Laxmi Muktan	Literate	Full Time	Office Attendant	Level 1	16-Jul-2024
31	Laxmi Sapkota	Plus 2	Full Time	Office Attendant	Level 1	16-Jul-2024
32	Puja Sedhai	Literate	Full Time	Office Attendant	Level 1	17-Oct-2024
33	Samjana Bote	Literate	Full Time	Office Attendant	Level 2	12-Nov-2016
34	Samjhana Kharel	Plus 2	Full Time	Office Attendant	Level 2	25-Nov-2016
35	Kumari Gurung	Literate	Full Time	Office Attendant	Level 2	25-Nov-2022
36	Puja Pokhrel	MA	Full Time	Psycho-Socio Counsellor		17-Oct-2024
37	Liladhar Rijal	Literate	Full Time	Security Guard	Level 5	21-Jul-2010
38	Ratna Gurung	Literate	Full Time	Security Guard	Office Attendant Level 3	1-Jan-2021

### Annex VII: Faculty Details

S.N.	Name of Faculties	Status	Prof.	Assoc. Prof.	Lecturer	Asst. Lecturer	Qualification	Class on		Years of Experience
								UG	PG	
1	Aprameya Khakurel	FT				✓	MBA	✓	✓	2
2	Bishnu Prasad Marahatta	FT			✓		MBA	✓		3
3	Dr. Sunil Pokharel	FT		✓			Ph.D.	✓	✓	15
4	Dr. Yamuna Kandel	PT			✓		Ph.D.	✓		11
5	Gopal Dhakal	FT			✓		M.Phil.	✓		5
6	Jagdish Timilsena	FT		✓			MBA	✓	✓	8
7	Kabindra Raj Panday	PT			✓		MBS	✓		11
8	Dr. Kapil Dev Subedi	PT		✓			Ph.D.	✓	✓	22
9	Kul Chandra Pandit	PT			✓		Ph.D. Scholar	✓		20
10	Madhav Prasad Adhikari	PT			✓		MSc Stat	✓	✓	9
11	Melina Adhikari	FT				✓	MBA	✓		3
12	Min Prasad Dawadi	FT		✓			M.Phil. Scholar	✓	✓	20
13	Mini Madhav Khanal	FT			✓		ME	✓	✓	6
14	Nabaraj Timilsena	FT			✓		MBS	✓		10
15	Nabin Kumar Shrestha	FT		✓			MCA	✓		17
16	Prem Nath Gaire	FT			✓		MBA		✓	3
17	Purna Dawadi	PT			✓		MBS	✓		15
18	Puspa Raj Adhikari	FT		✓			MSBA	✓		20
19	Puspa Raj Prasai	PT			✓		MBS	✓		9
20	Rabi Bhattarai	PT			✓		MA	✓		19
21	Rahul Kumar	FT				✓	MCA	✓		6
22	Roshan Sharma Bhattarai	FT			✓		MBS	✓		7
23	Rudra Chalise	PT			✓		MA	✓		14

24	Sandeep Barakoti	PT			✓		MBS	✓		16
25	Sandip Khanal	FT				✓	MCA	✓		6
26	Sankalpa Jung Rana	FT			✓		MBS	✓		7
27	Sarita Thapa	FT			✓		MA	✓		6
28	Sashi Bhusal	PT			✓		MSc	✓		9
29	Shikhar Lamichhane	FT			✓		MBA	✓	✓	2
30	Shiva Bahadur Pathak	FT				✓	MCA	✓		2
31	Shiva Raj Bartaula	FT			✓		M.Phil. Scholar	✓		20
32	Srijana Pandit	FT			✓		MA Economics	✓		7
33	Sudeep Thapaliya	PT				✓	MCA	✓		3
34	Sujita Adhikari	PT				✓	MBA	✓		3
35	Sunita Gurung	FT				✓	M.Com	✓	✓	4
36	Sushil Regmi	PT				✓	MBA	✓		10
37	Tej Aryal	FT				✓	MCA	✓		5
38	Tritha Adhikari	PT				✓	MCA	✓		11
39	Sandip Sapkota	FT				✓	BHM, MBS	✓		2
40	Nareesh Baral	PT				✓	MTM	✓		10
41	Bimal Aryal	FT				✓	BHM, MBS	✓		4
42	Prabina Shah	FT				✓	MBA	✓		2
43	Rajan Kumal	FT				✓	CHEF	✓		15
44	Suman Poudel	PT			✓		MBA		✓	15